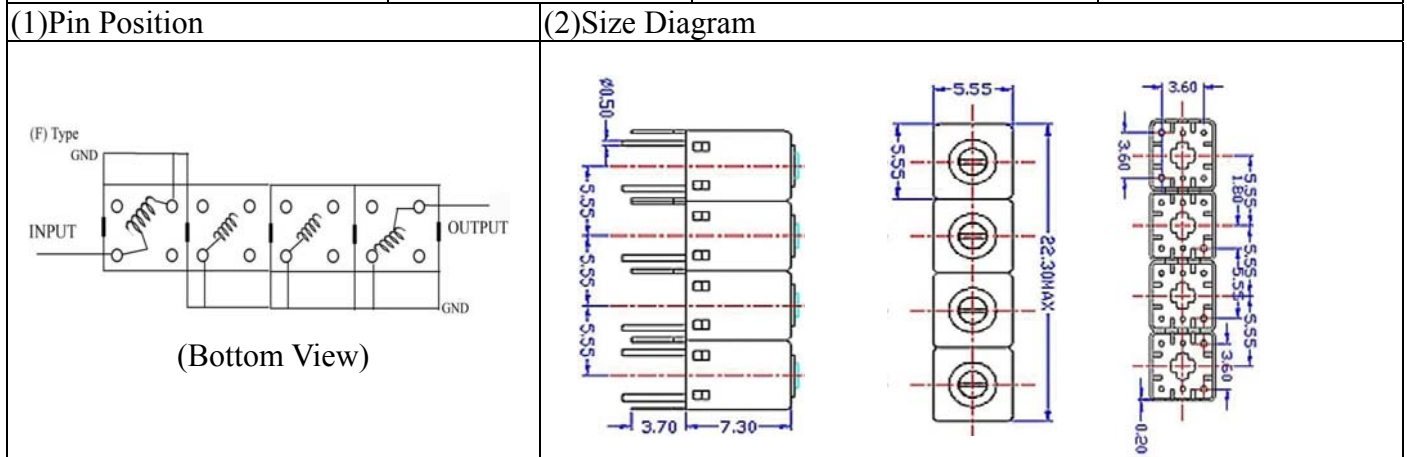


# VHF UHF Helical Filter Specification Sheet

Customer Name		Temwell's Part No.	K4RF-1090M-20M
Approval No. /dated	0905067CD	Temwell's Print Name.	K4RF 1090M
Work Instruction No.	200905067CD	Date	Jun.05.2009



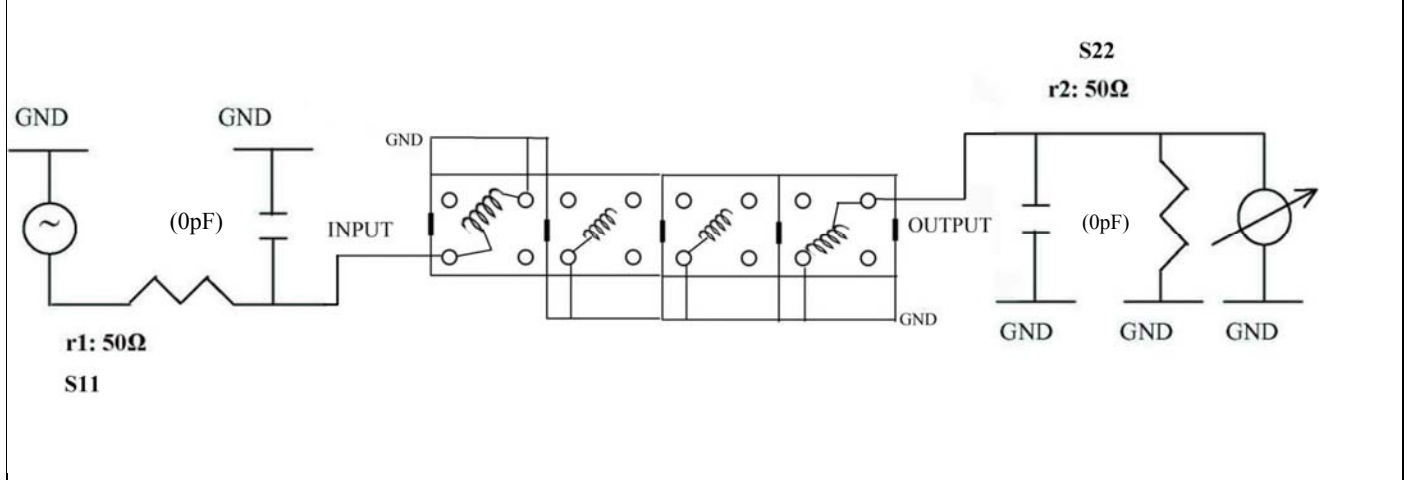
(3) Electric Characteristic					
Item		Specify		Performance	
Center Freq.(Fo) +/- 0.5 %		1090	MHz	1090	MHz
Insertion Loss		Typ. 5.0	dB	4.58	dB
-3 dB Bandwidth		Typ. 20	MHz	31.2	MHz
Sensitivity (Attenuation)	Fo - 50 MHz	Typ. 37	dBc	40	dBc
	Fo + 50 MHz	Typ. 40	dBc	43	dBc
	Fo - ( )MHz	Typ.	dBc		dBc
	Fo +( )MHz	Typ.	dBc		dBc
Return Loss		Min. 12	dB	18.2	dB
Ripple		< 1	dB		dB
Impedance		In / Out : 50 Ω		In / Out : 50 Ω	

(4) Torque for Tuning Screw > 100gf • cm

(5) Temperature Condition:	
Operating Temperature	0°C ~ +60°C
Storage Temperature	-20°C ~ +70°C

(6) Input Power > 0.5Watt

(7) Measuring Circuit: ※Easy to match Impedance S11/S22 50Ω by parallel with about( 0pF) / ( 0pF).



Approval	Supervisor	Designer	Aperture size
C.Y.Chang	C.K.Chang	C.S.Chang	5R4(3.8*3.7)(3.68) 5HW024RB3

TEMWELL CORPORATION

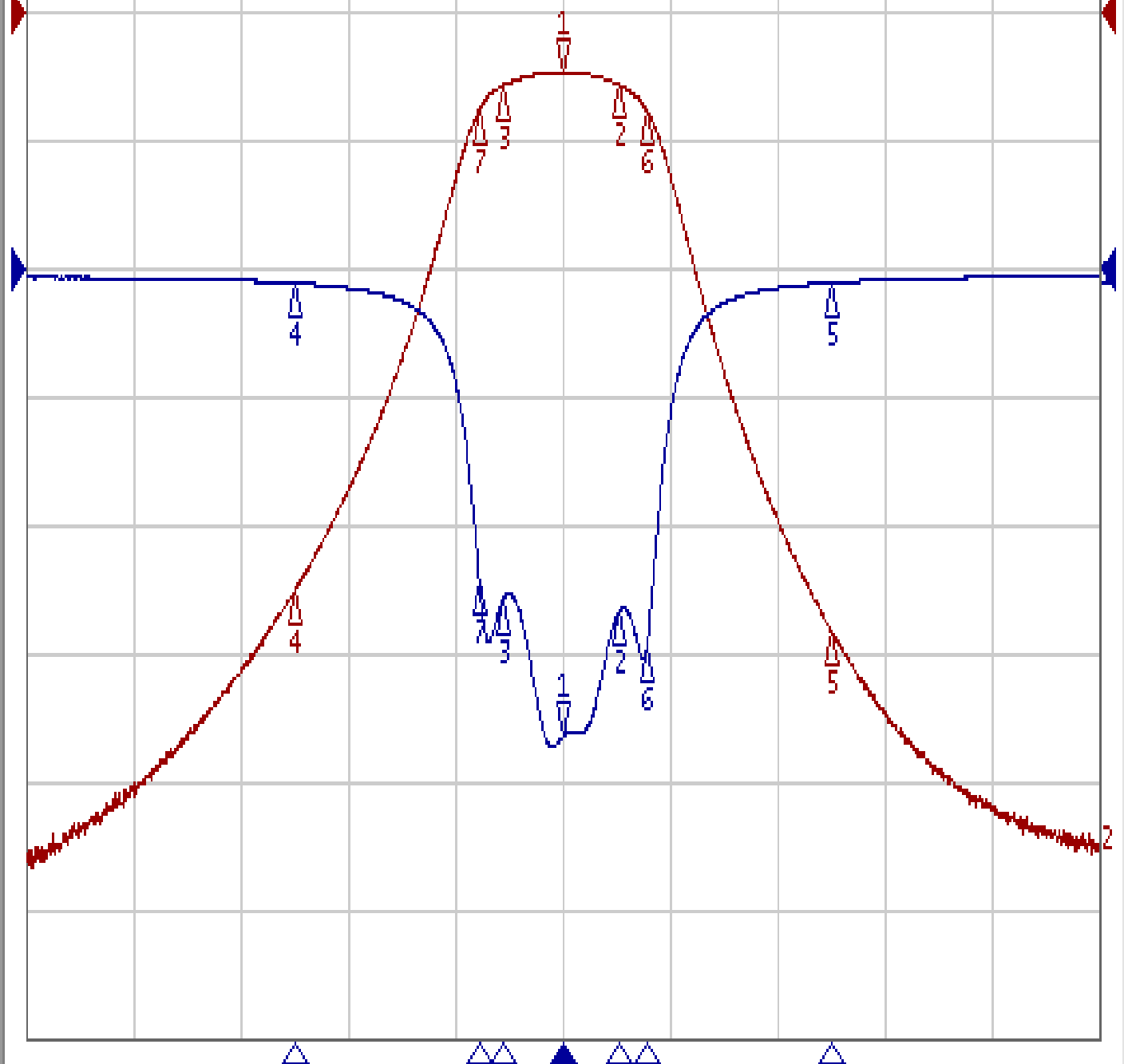
# Performance-K4RF-1090M-20M

## 200905067CD

Tr1 S11 Log Mag 5.000dB/ Ref 0.000dB [F3]  
Tr2 S21 Log Mag 10.00dB/ Ref 0.000dB [F3]

1	1.0900000 GHz	-4.5898 dB
2	1.1004690 GHz	-5.5824 dB
3	1.0788555 GHz	-5.6305 dB
4	1.0400000 GHz	-45.102 dB
5	1.1400000 GHz	-48.127 dB
6	1.1056723 GHz	-7.5697 dB
7	1.0744528 GHz	-7.5426 dB

>1	1.0900000 GHz	-18.241 dB
2	1.1004690 GHz	-13.359 dB
3	1.0788555 GHz	-12.876 dB
4	1.0400000 GHz	-0.5282 dB
5	1.1400000 GHz	-0.5135 dB
6	1.1056723 GHz	-14.739 dB
7	1.0744528 GHz	-12.059 dB



1 Center 1.09 GHz

IFBW 10 kHz

Span 200 MHz

C?