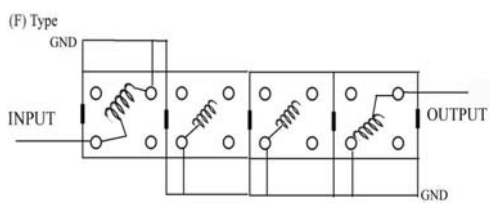
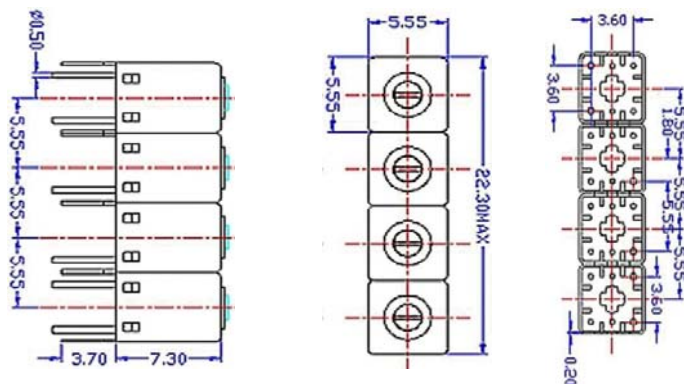


VHF UHF Helical Filter Specification Sheet

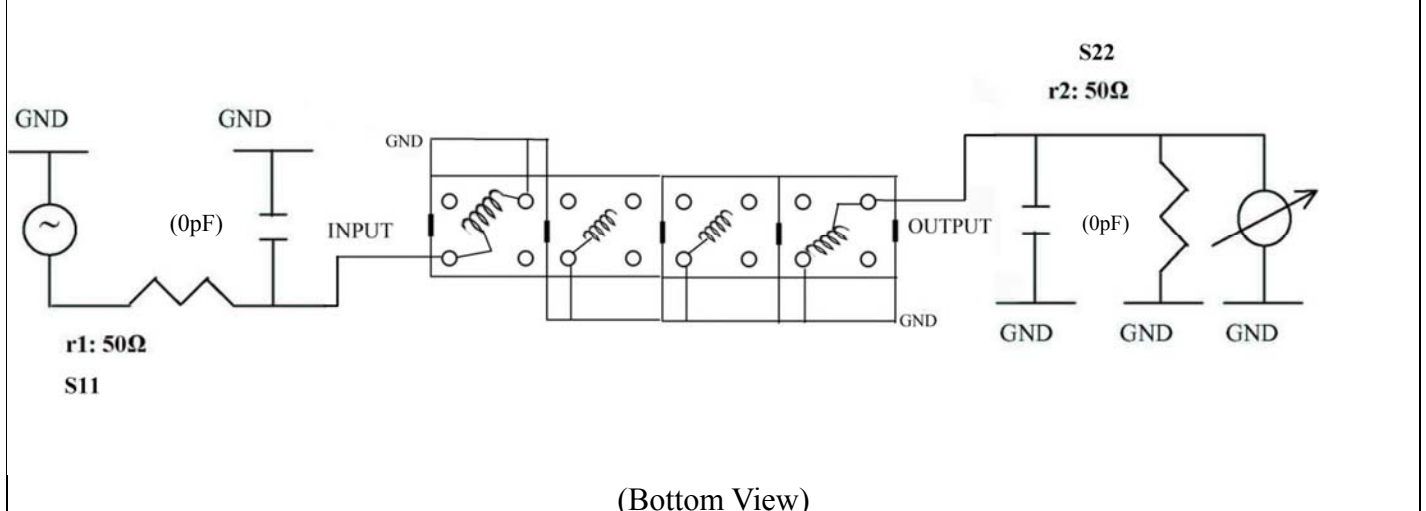
Customer Name		Temwell's Part No.	K4RF-830M-20M
Approval No. /dated	0905070CD	Temwell's Print Name.	K4RF 830M
Work Instruction No.	200905070CD	Date	Jun.06.2009

<p>(1) Pin Position</p>  <p>(F) Type GND INPUT OUTPUT GND</p> <p>(Bottom View)</p>	<p>(2) Size Diagram</p> 
---	--

(3) Electric Chararistic			
Item		Specify	Performance
Center Freq.(Fo) +/- 0.5 %		830 MHz	830 MHz
Insertion Loss		Typ. 4.5 dB	3.81 dB
-3 dB Bandwidth		Typ. 20 MHz	25.0 MHz
Sensitivity (Attenuation)	Fo - 50 MHz	Typ. 41 dBc	44 dBc
	Fo + 50 MHz	Typ. 41 dBc	44 dBc
	Fo - ()MHz	Typ. dBc	dBc
	Fo +()MHz	Typ. dBc	dBc
Return Loss		Min. 12 dB	23.0 dB
Ripple		< 1 dB	dB
Impedance		In / Out : 50 Ω	In / Out : 50 Ω
(4) Torque for Tuning Screw		> 60gf • cm	

(5) Temperature Condition:	
Operating Temperature	0°C ~ +60°C
Storage Temperature	-20°C ~ +70°C
(6) Input Power	> 0.5Watt

(7) Measuring Circuit: ※Easy to match Impedance S11/S22 50Ω by parallel with about(0pF) / (0pF).

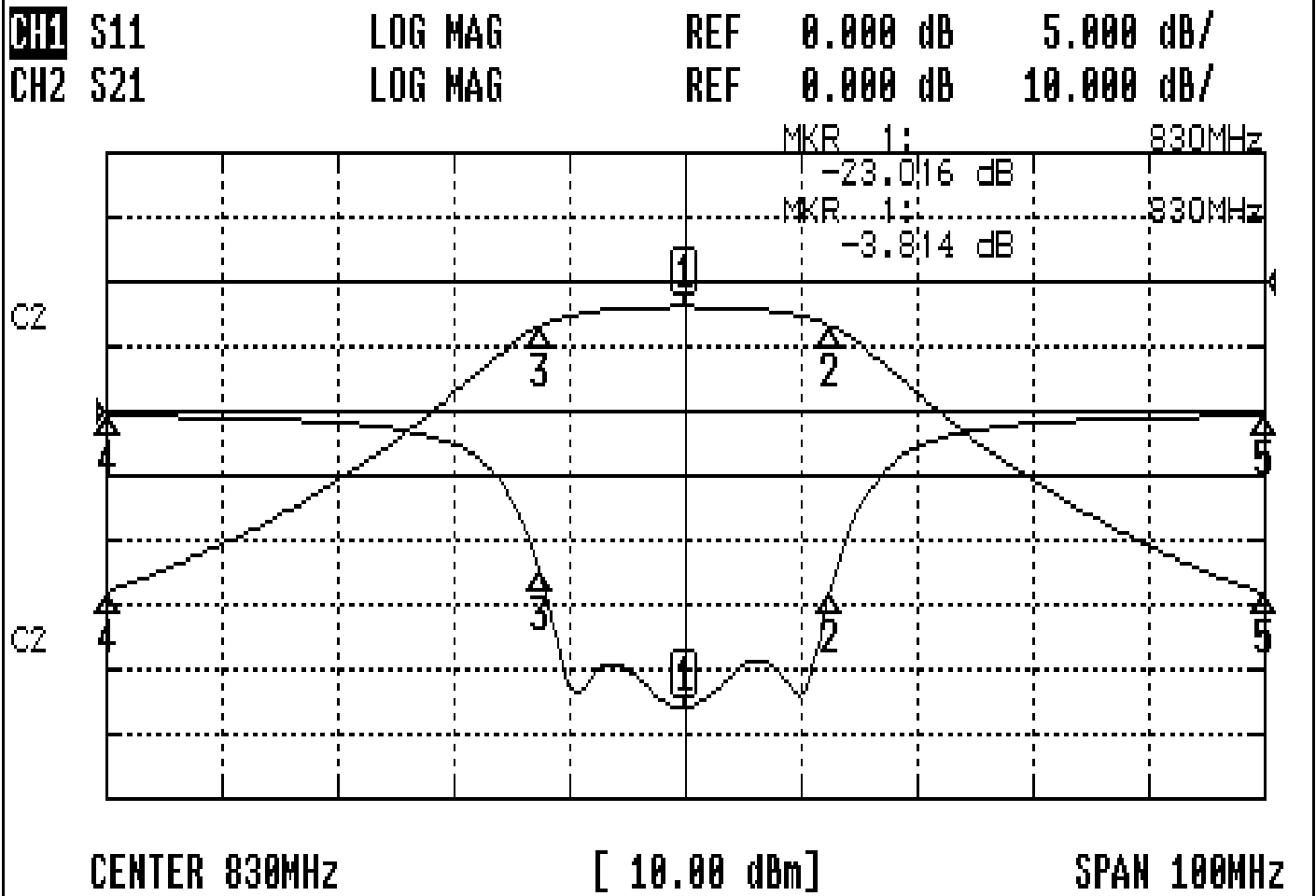


Approval C.Y.Chang	Supervisor C.K.Chang	Designer Y.H.Yeh	Aperture size 5R4S(3.8*3.7)(3.73) 5HW024RB3
-----------------------	-------------------------	---------------------	---

TEMWELL CORPORATION

Performance-K4RF-830M-20M

200905070CD



CH1 MARKER LIST

1:	830.000MHz	-23.016	dB
2:	842.500MHz	-14.221	dB
3:	817.500MHz	-12.442	dB
4:	780.000MHz	-0.361	dB
5:	880.000MHz	-0.368	dB
6:			
7:			
8:			
9:			
10:			

CH2 MARKER LIST

1:	830.000MHz	-3.814	dB
2:	842.500MHz	-6.037	dB
3:	817.500MHz	-6.077	dB
4:	780.000MHz	-4.984	dB
5:	880.000MHz	-48.342	dB
6:			
7:			
8:			
9:			
10:			