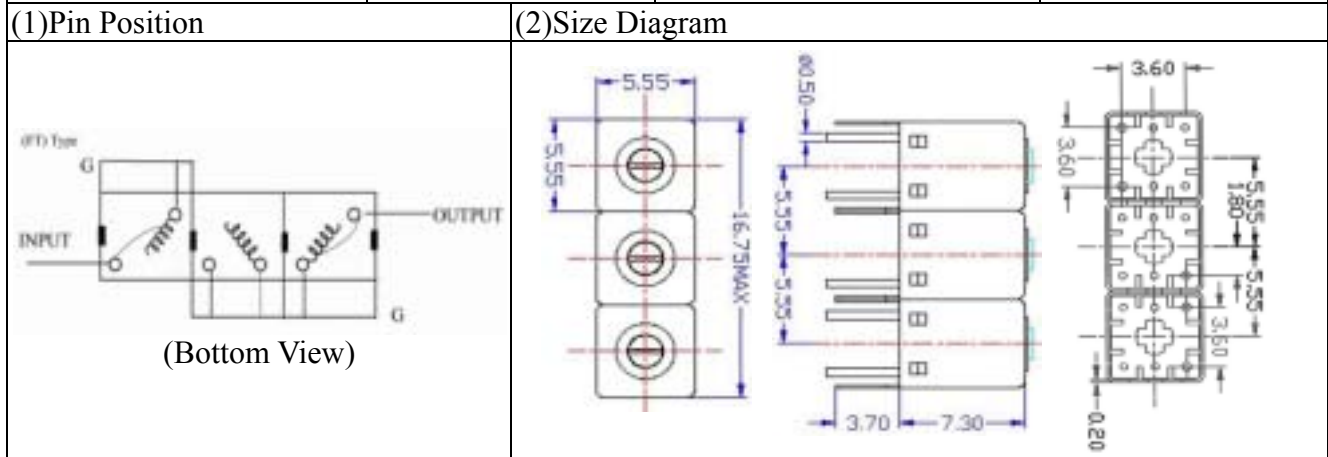


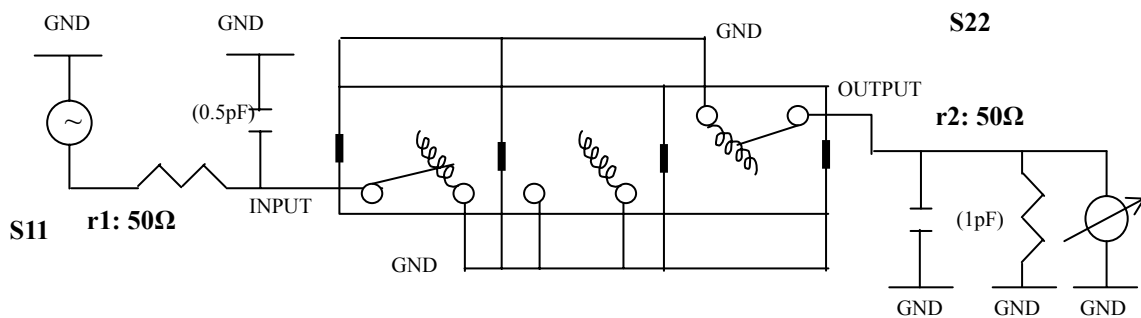
VHF UHF Helical Filter Specification Sheet

Customer Name		Temwell's Part No.	K3RFT-380M-20M
Approval No. /dated	20403025DC	Customer's Part No.	
Work Instruction No.	20403025DC	Date	Mar.17.2004



(3) Electric Characteristic	
Item	Specify
Center Freq.(Fo) +/- 0.5 %	380 MHz
Insertion Loss	Typ. 4.0 dB
-3 dB Bandwidth	Typ. 20 MHz
Sensitivity (Attenuation)	Fo - 50 MHz Typ. 28 dBc
	Fo + 50 MHz Typ. 24 dBc
	Fo - ()MHz Typ. dBc
	Fo +()MHz Typ. dBc
Return Loss	Min. 12 dB
Ripple	< 1 dB
Impedance	In / Out : 50 Ω
(4) Torque for Tuning Screw > 60gf cm	
(5) Temperature Condition:	
Operating Temperature	0 ~ +60
Storage Temperature	20 ~ +70
(6) Input Power > 1Watt	

(7) Measuring Circuit: Easy to match Impedance S11/S22 50Ω/ by parallel with about(0.5 pF) / (1pF).



(Bottom View)

Approval	Supervisor	Designer	Aperture size
	C.S.Chang	Enlan	5w3(3.8*4.5)(4.64)

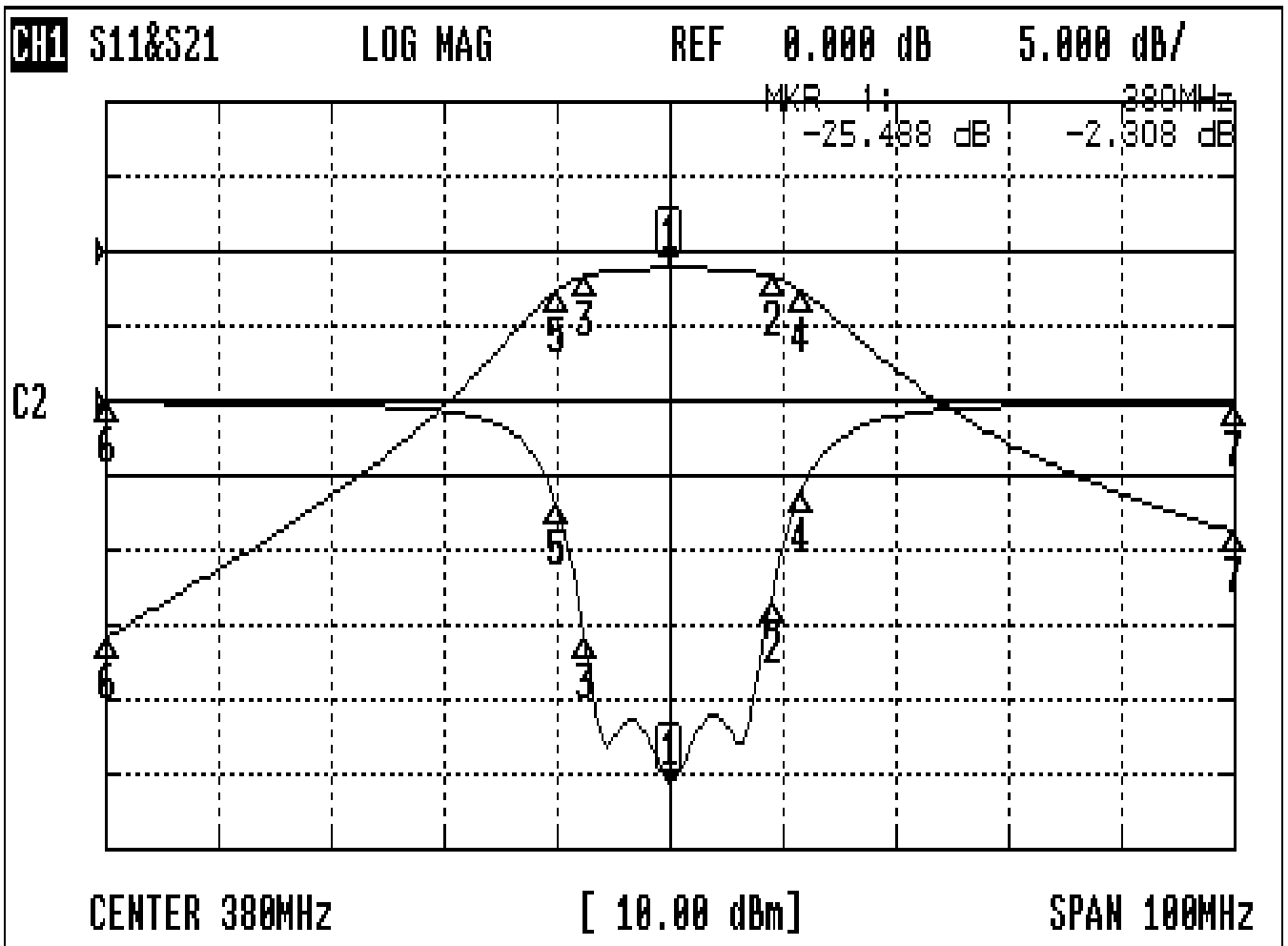
TEMWELL CORPORATION

TEMWELL

Form10-5R3BT Vision D

Performance-K3RFT-380M-20M

20403025DC



CH1 MARKER LIST

1:	380.000MHz	-25.488 dB	-2.308 dB
2:	389.000MHz	-13.316 dB	-3.318 dB
3:	372.500MHz	-15.676 dB	-3.323 dB
4:	391.666MHz	-6.134 dB	-5.316 dB
5:	369.970MHz	-6.900 dB	-5.323 dB
6:	330.000MHz	-0.112 dB	-51.754 dB
7:	430.000MHz	-0.146 dB	-37.516 dB
8:			
9:			
10:			