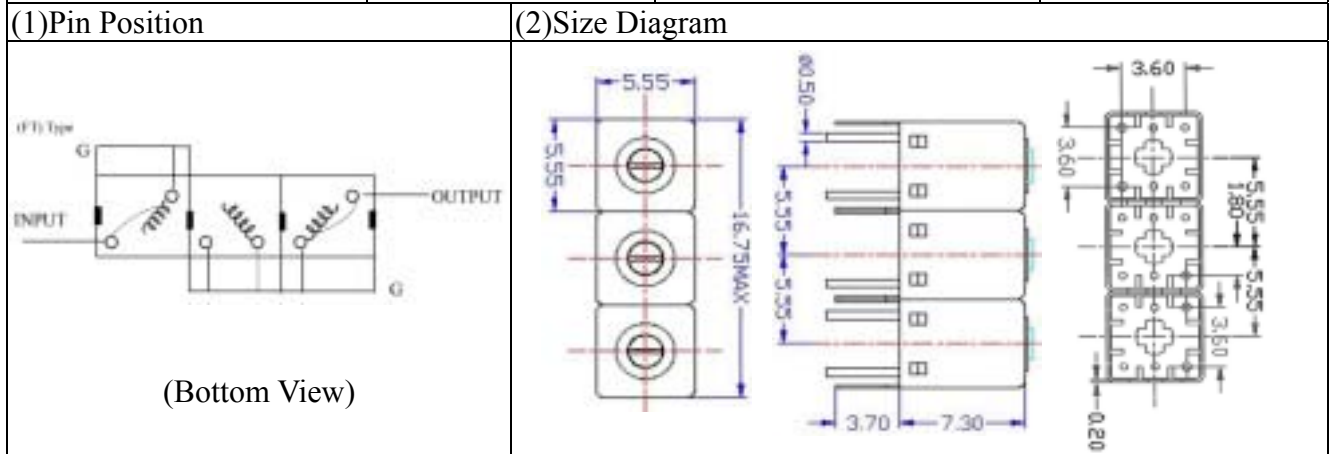


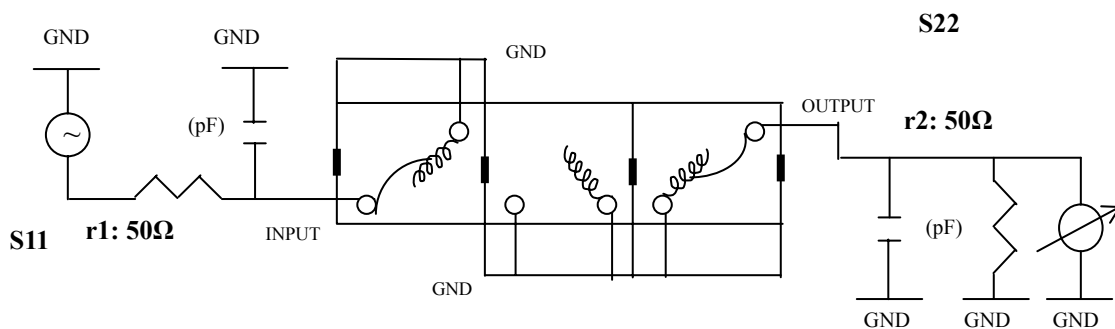
VHF UHF Helical Filter Specification Sheet

Customer Name		Temwell's Part No.	K3RFT-390M-20M
Approval No. /dated	1001003CD	Temwell's Print Name	K3RFT 390M
Work Instruction No.	201001003CD	Date	Jan.29.2010



(3) Electric Charasteric	
Item	Specify
Center Freq.(Fo) +/- 0.5 %	390 MHz
Insertion Loss	Typ. 4.0 dB
-3 dB Bandwidth	Typ. 20 MHz
Sensitivity (Attenuation)	Fo - 50 MHz Typ. 28 dBc
	Fo + 50 MHz Typ. 24 dBc
	Fo - ()MHz Typ. dBc
	Fo +()MHz Typ. dBc
Return Loss	Min. 12 dB
Ripple	< 1 dB
Impedance	In / Out : 50 Ω
(4) Torque for Tuning Screw	
> 60gf cm	
(5) Temperature Condition:	
Operating Temperature	0 ~ +60
Storage Temperature	-20 ~ +70
(6) Input Power	
> 0.5Watt	

(7) Measuring Circuit: Easy to match Impedance S11/S22 50Ω by parallel with about(0pF) / (0pF).



(Bottom View)

Approval C.Y.Chang	Supervisor C.K.Chang	Designer F.L.Lai	Aperture size 5R3S(3.8*3.7)(3.74) 5HW020RB3.5
-----------------------	-------------------------	---------------------	---

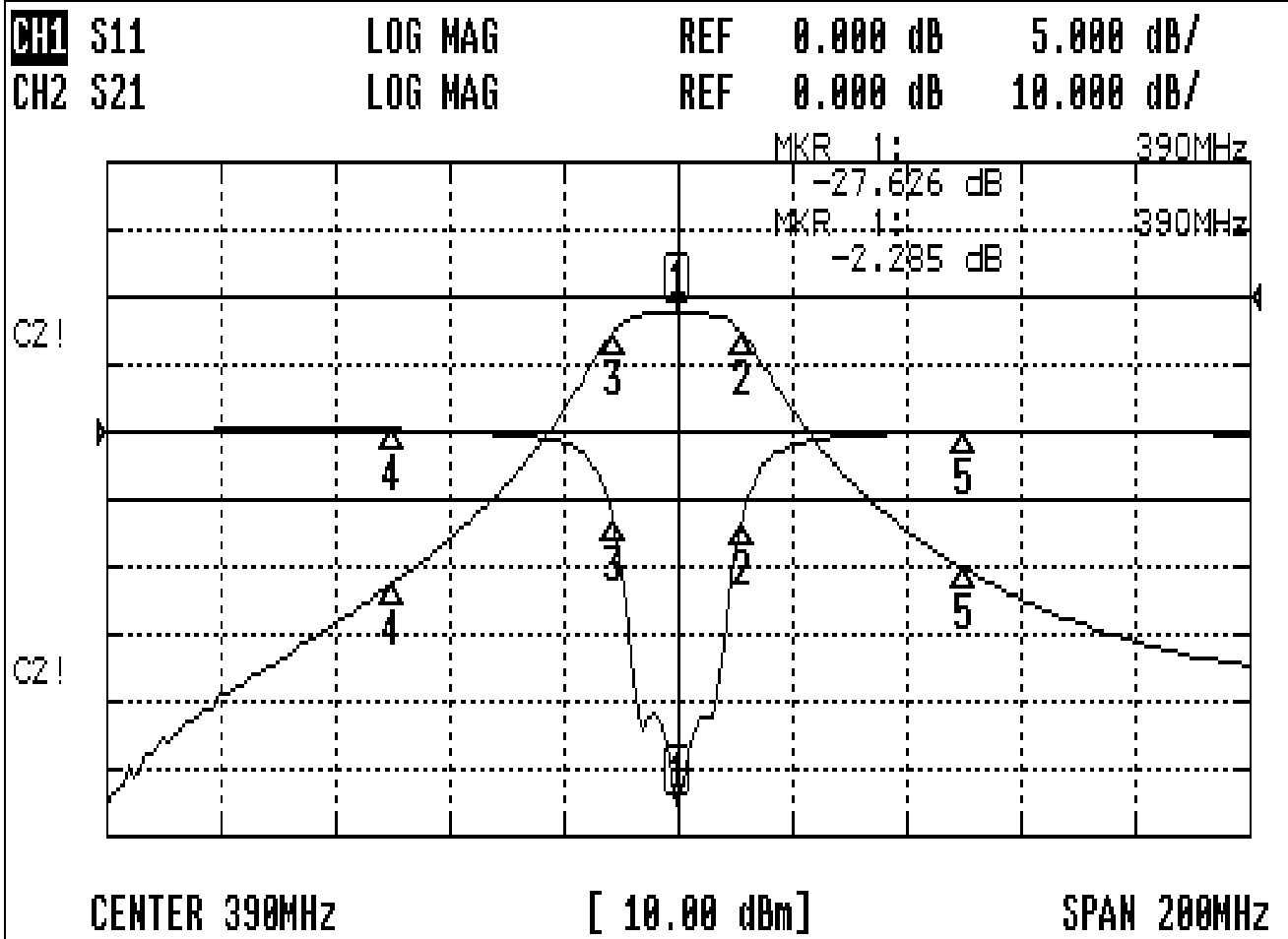
TEMWELL CORPORATION

TEMWELL

Form10-5R3FT Vision D RP(F.L.L)

Performance-K3RFT-390M-20M

201001003CD



CH1 MARKER LIST

1:	390.000MHz	-27.626 dB
2:	401.200MHz	-6.695 dB
3:	378.600MHz	-6.309 dB
4:	340.000MHz	-0.173 dB
5:	440.000MHz	-0.011 dB

CH2 MARKER LIST

1:	390.000MHz	-2.285 dB
2:	401.200MHz	-23.390 dB
3:	378.600MHz	-25.577 dB
4:	340.000MHz	-42.502 dB
5:	440.000MHz	-40.288 dB