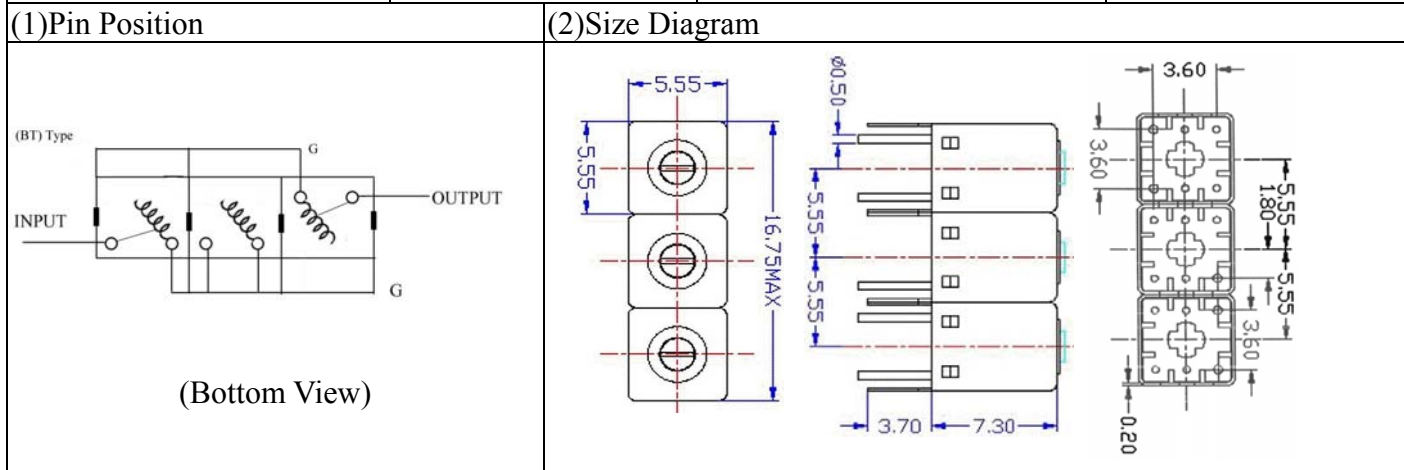


VHF UHF Helical Filter Specification Sheet

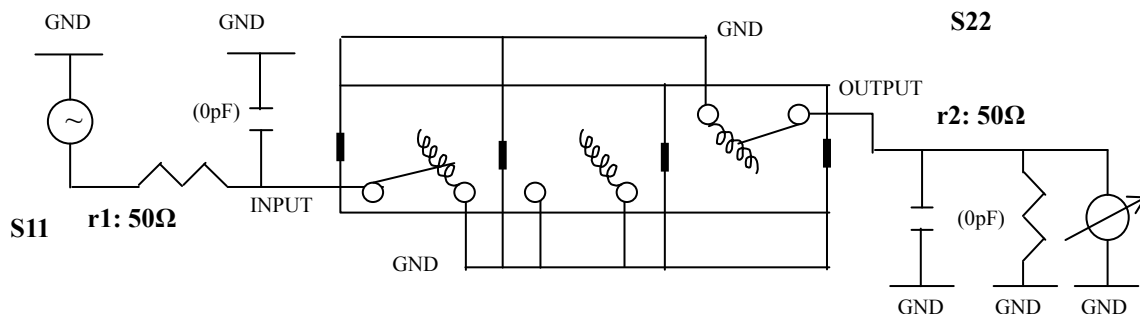
Customer Name		Temwell's Part No.	K3RBT-880M-20M
Approval No. /dated	0909074CD	Temwell's Print name	K3RBT 880M
Work Instruction No.	200909074CD	Date	Oct.21.009



(3) Electric Characteristic

Item	Specify	Performance	
Center Freq.(Fo) +/- 0.5 %	880 MHz	880 MHz	
Insertion Loss	Typ. 4.0 dB	3.07 dB	
-3 dB Bandwidth	Typ. 20 MHz	25.1 MHz	
Sensitivity (Attenuation)	Fo - 50 MHz	Typ. 24 dBc	33 dBc
	Fo + 50 MHz	Typ. 20 dBc	27 dBc
	Fo - ()MHz	Typ. dBc	dBc
	Fo + ()MHz	Typ. dBc	dBc
Return Loss	Min. 12 dB	36.1 dB	
Ripple	< 1 dB	dB	
Impedance	In / Out : 50 Ω	In / Out : 50 Ω	
(4) Torque for Tuning Screw	> 60gf · cm		
(5) Temperature Condition:			
Operating Temperature	0°C ~ +60°C		
Storage Temperature	-20°C ~ +70°C		
(6) Input Power	> 0.5Watt		

(7) Measuring Circuit: ※Easy to match Impedance S11/S22 50Ω/ by parallel with about (0pF) / (0pF).

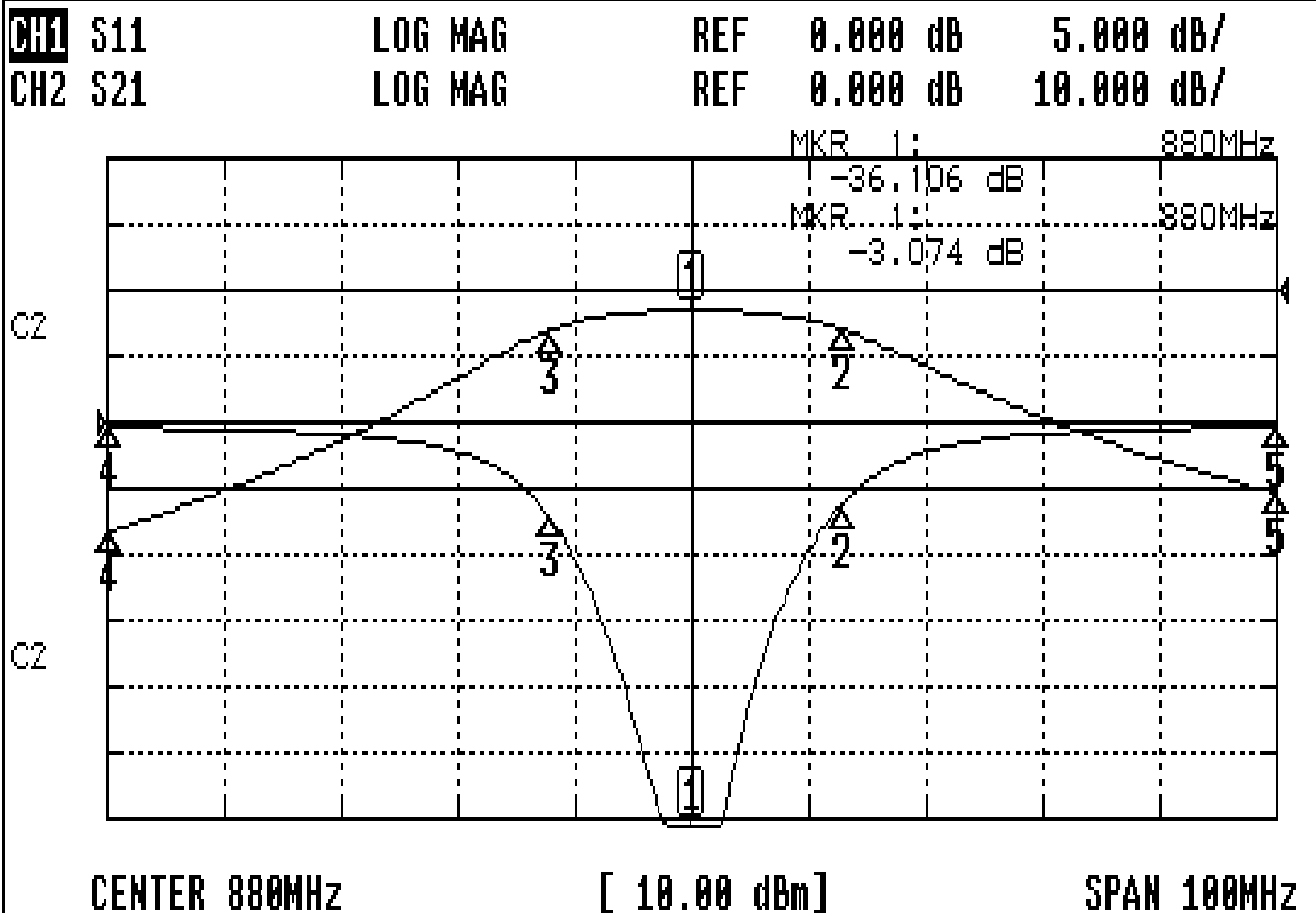


(Bottom View)

Approval	Supervisor	Designer	Aperture size
C.Y.Chang	C.K.Chang	Y.H.Ydeh	5R3S(3.8*3.7)(3.76) 5HW024RB3
TEMWELL CORPORATION			

Performance-K3RBT-880M-20M

200909074CD



CH1 MARKER LIST			
1:	880.000MHz	-36.106	dB
2:	892.916MHz	-6.172	dB
3:	867.833MHz	-7.101	dB
4:	880.000MHz	-0.390	dB
5:	930.000MHz	-0.355	dB
6:			
7:			
8:			
9:			
10:			

CH2 MARKER LIST			
1:	880.000MHz	-3.074	dB
2:	892.916MHz	-6.011	dB
3:	867.833MHz	-6.076	dB
4:	880.000MHz	-36.493	dB
5:	930.000MHz	-30.643	dB
6:			
7:			
8:			
9:			
10:			