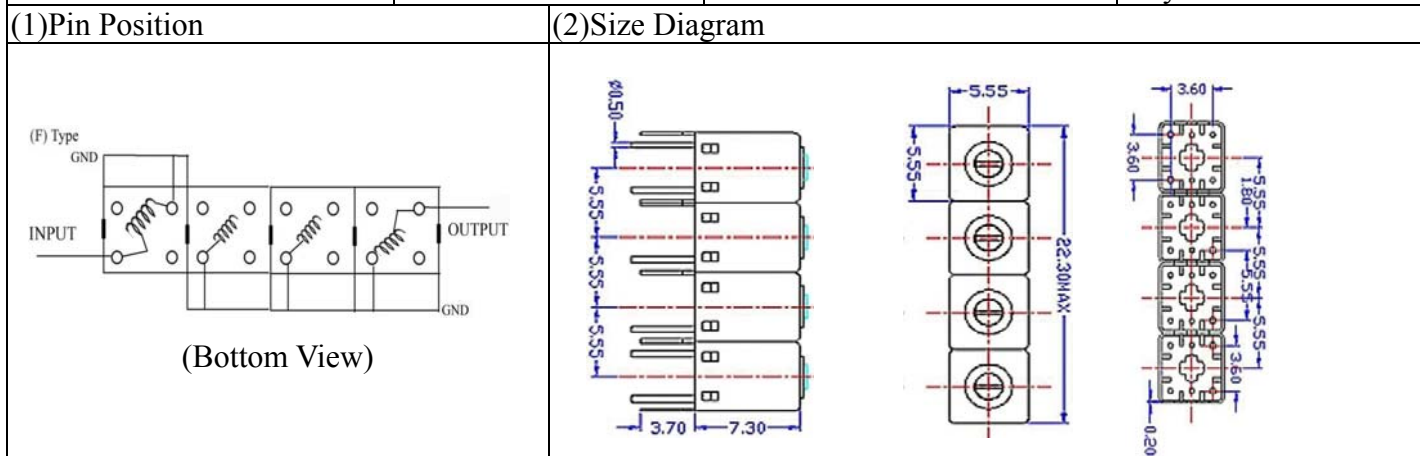


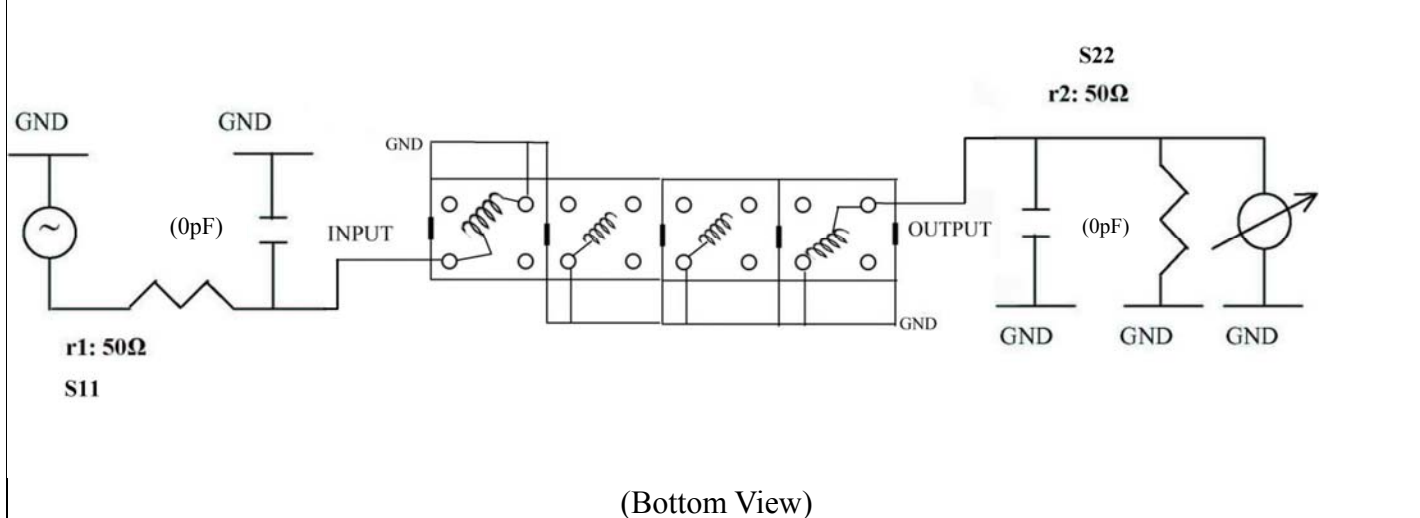
VHF UHF Helical Filter Specification Sheet

Customer Name		Temwell's Part No.	K4RF-380M-20M
Approval No. /dated	0904180CD	Temwell's Print Name.	K4RF 380M
Work Instruction No.	200904180CD	Date	May.14.2009



(3) Electric Chararistic					
Item		Specify		Performance	
Center Freq.(Fo) +/- 0.5 %		380 MHz		380 MHz	
Insertion Loss		Typ. 4.0 dB		3.40 dB	
-3 dB Bandwidth		Typ. 20 MHz		21.3 MHz	
Sensitivity (Attenuation)	Fo - 50 MHz	Typ. 57 dBc		60 dBc	
	Fo + 50 MHz	Typ. 43 dBc		46 dBc	
	Fo - ()MHz	Typ. dBc		dBc	
	Fo +()MHz	Typ. dBc		dBc	
Return Loss		Min. 12 dB		15.6 dB	
Ripple		< 1 dB		dB	
Impedance		In / Out : 50 Ω		In / Out : 50 Ω	
(4) Torque for Tuning Screw		> 60gf · cm			
(5) Temperature Condition:					
Operating Temperature		0°C ~ +60°C			
Storage Temperature		-20°C ~ +70°C			
(6) Input Power		> 0.5Watt			

(7) Measuring Circuit: ※Easy to match Impedance S11/S22 50Ω by parallel with about(0pF) / (0pF).

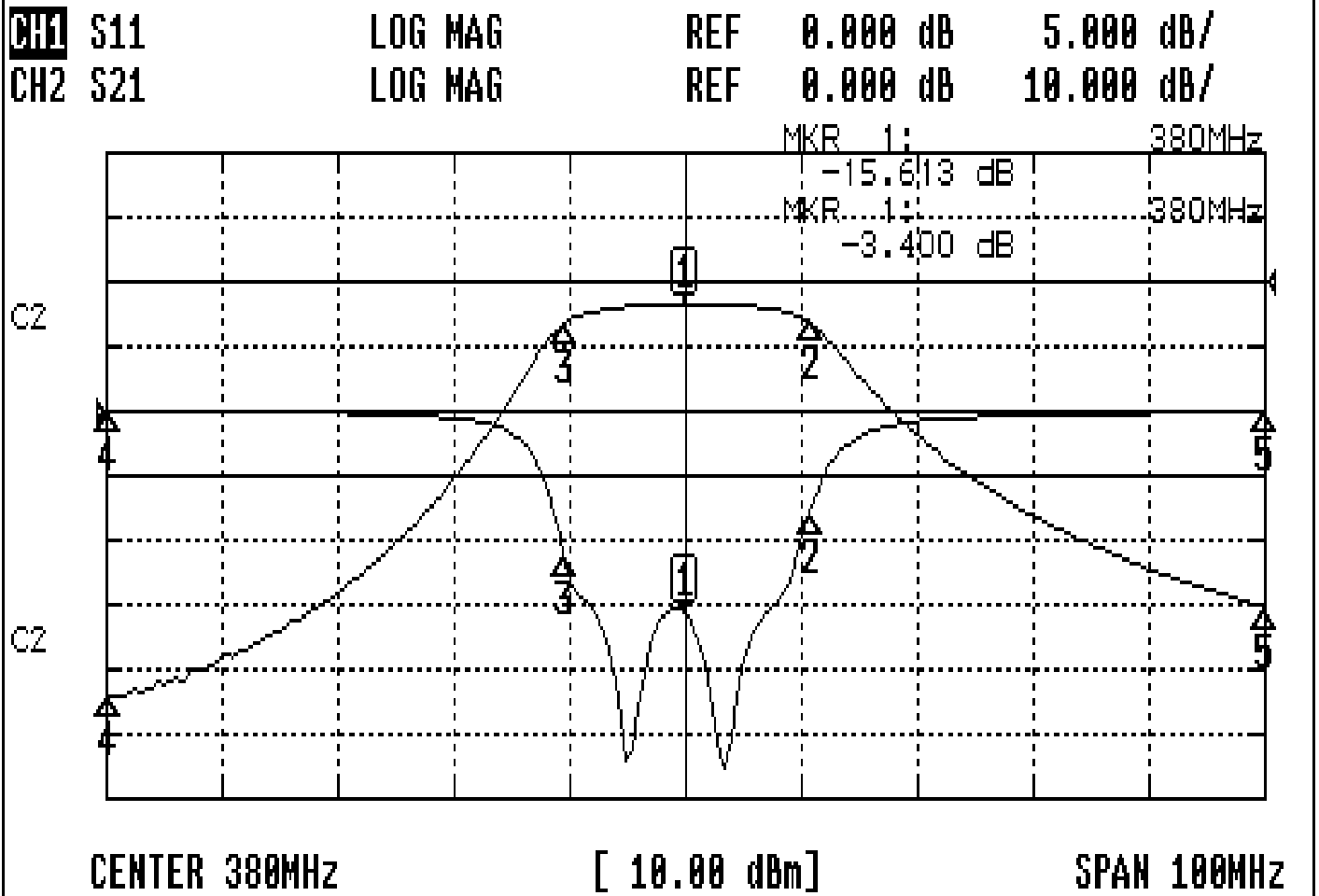


Approval C.Y.Chang	Supervisor C.K.Chang	Designer Y.H.Yeh	Aperture size 5R4S(3.8*4.7)(4.71) 5HW024LB3
-----------------------	-------------------------	---------------------	---

TEMWELL CORPORATION

Performance-K4RF-380M-20M

200904180CD



CH1 MARKER LIST

1:	380.000MHz	-15.613 dB
2:	390.000MHz	-7.704 dB
3:	399.000MHz	-11.084 dB
4:	400.000MHz	-0.014 dB
5:	430.000MHz	-0.074 dB

10:

CH2 MARKER LIST

1:	380.000MHz	-3.400 dB
2:	390.000MHz	-6.450 dB
3:	399.000MHz	-6.473 dB
4:	400.000MHz	-4.272 dB
5:	430.000MHz	-50.388 dB

10: