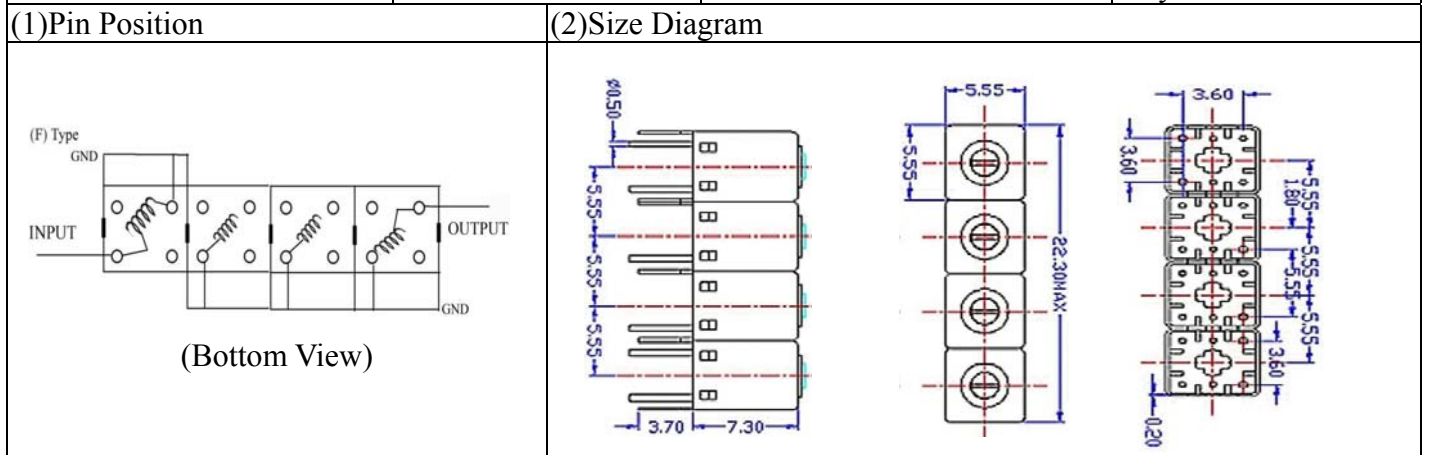


VHF UHF Helical Filter Specification Sheet

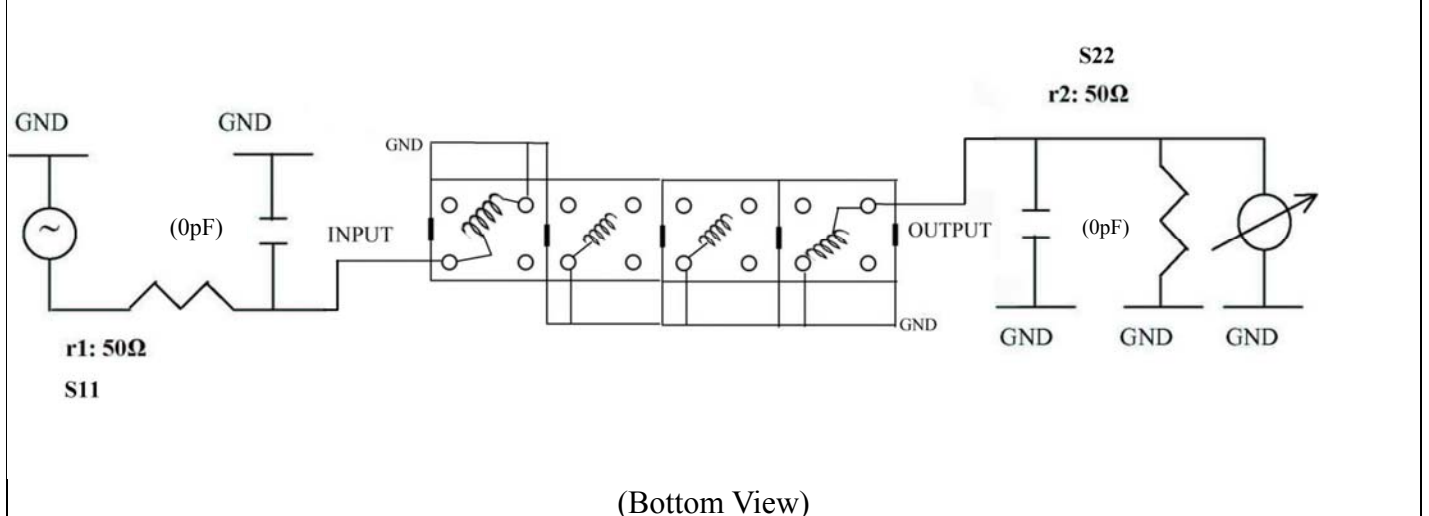
| | | | |
|----------------------|-------------|-----------------------|---------------|
| Customer Name | | Temwell's Part No. | K4RF-400M-18M |
| Approval No. /dated | 0904181 CD | Temwell's Print Name. | K4RF 400M |
| Work Instruction No. | 200904181CD | Date | May.05.2009 |



| (3) Electric Characteristic | | | |
|------------------------------|-------------|-----------------|-----------------|
| Item | | Specify | Performance |
| Center Freq.(Fo) +/- 0.5 % | | 400 MHz | 400 MHz |
| Insertion Loss | | Typ. 4.0 dB | 3.47 dB |
| -3 dB Bandwidth | | Typ. 18 MHz | 20.6 MHz |
| Sensitivity (Attenuation) | Fo - 50 MHz | Typ. 57 dBc | 60 dBc |
| | Fo + 50 MHz | Typ. 48 dBc | 51 dBc |
| | Fo - ()MHz | Typ. dBc | dBc |
| | Fo + ()MHz | Typ. dBc | dBc |
| Return Loss | | Min. 12 dB | 17.9 dB |
| Ripple | | < 1 dB | dB |
| Impedance | | In / Out : 50 Ω | In / Out : 50 Ω |
| (4) Torque for Tuning Screw | | > 60gf · cm | |

| (5) Temperature Condition: | |
|----------------------------|---------------|
| Operating Temperature | 0°C ~ +60°C |
| Storage Temperature | -20°C ~ +70°C |
| (6) Input Power | > 0.5Watt |

(7) Measuring Circuit: ※Easy to match Impedance S11/S22 50Ω by parallel with about(0pF) / (0pF).



| | | | |
|-----------|------------|----------|---------------------------------|
| Approval | Supervisor | Designer | Aperture size |
| C.Y.Chang | C.S.Chang | W.W.Wang | 5R4(3.8*4.2)(4.21) 5HW024RB3 |

TEMWELL CORPORATION

TEMWELL

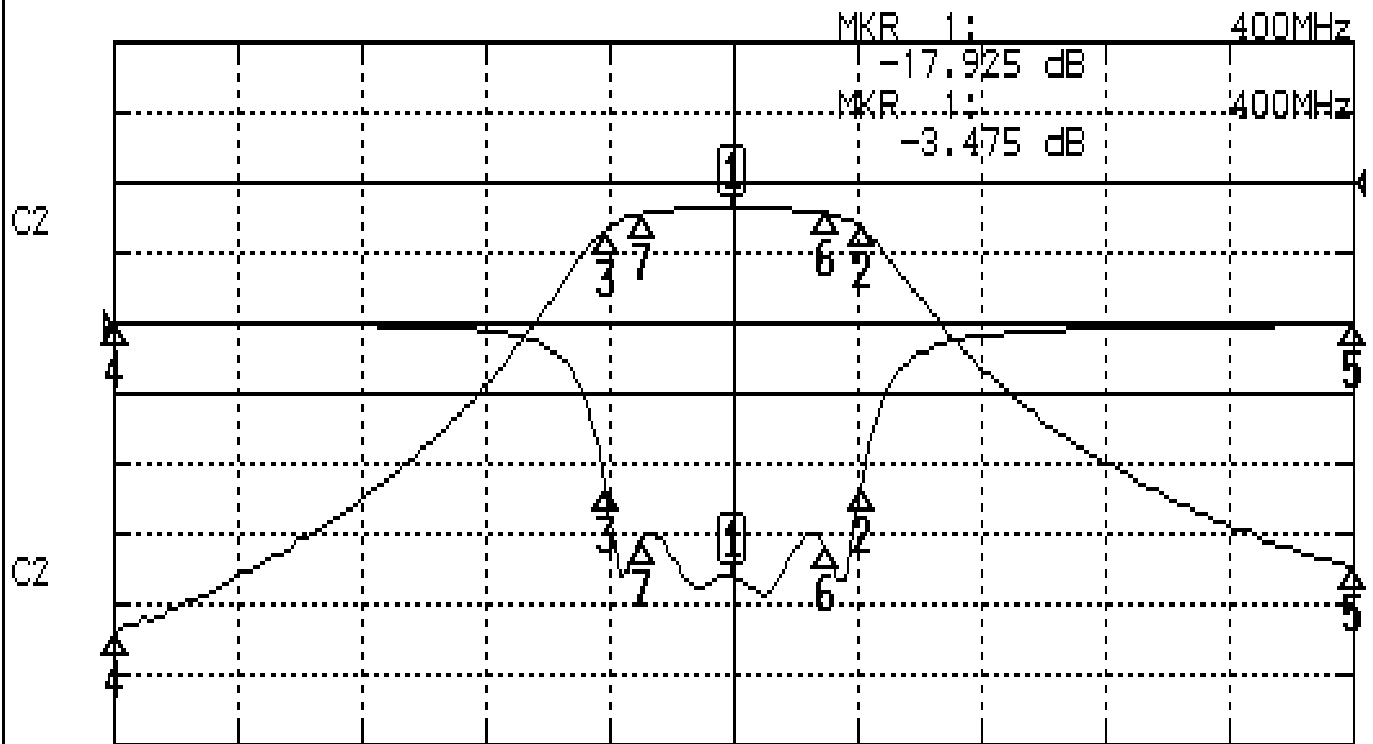
Form10-5R4F Vision D

RP (w.w.w)

Performance-K4RF-400M-18M

200904181CD

CH1 S11 LOG MAG REF 0.000 dB 5.000 dB/
CH2 S21 LOG MAG REF 0.000 dB 10.000 dB/



CENTER 400MHz

[10.00 dBm]

SPAN 100MHz

CH1 MARKER LIST

| Marker | Frequency (MHz) | Amplitude (dB) |
|--------|-----------------|----------------|
| 1: | 400.000 | -17.925 |
| 2: | 410.333 | -11.706 |
| 3: | 389.750 | -11.794 |
| 4: | 350.000 | -0.012 |
| 5: | 450.000 | -0.105 |
| 6: | 407.500 | -16.005 |
| 7: | 392.666 | -15.407 |
| 8: | | |
| 9: | | |
| 10: | | |

CH2 MARKER LIST

| Marker | Frequency (MHz) | Amplitude (dB) |
|--------|-----------------|----------------|
| 1: | 400.000 | -3.475 |
| 2: | 410.333 | -1.602 |
| 3: | 389.750 | -1.504 |
| 4: | 350.000 | -6.884 |
| 5: | 450.000 | -5.011 |
| 6: | 407.500 | -4.399 |
| 7: | 392.666 | -4.438 |
| 8: | | |
| 9: | | |
| 10: | | |