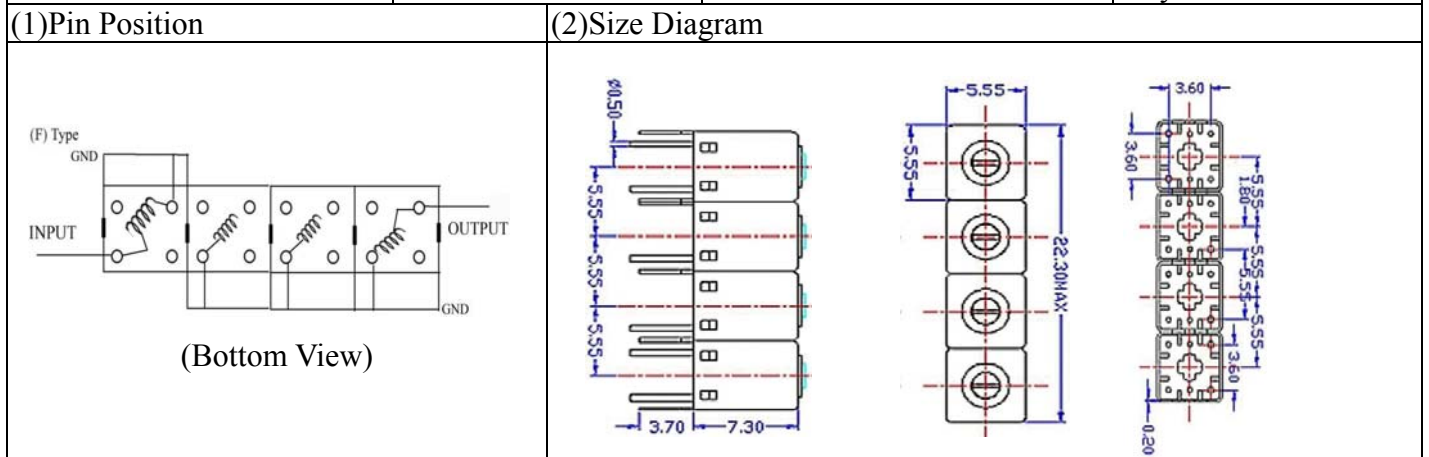


VHF UHF Helical Filter Specification Sheet

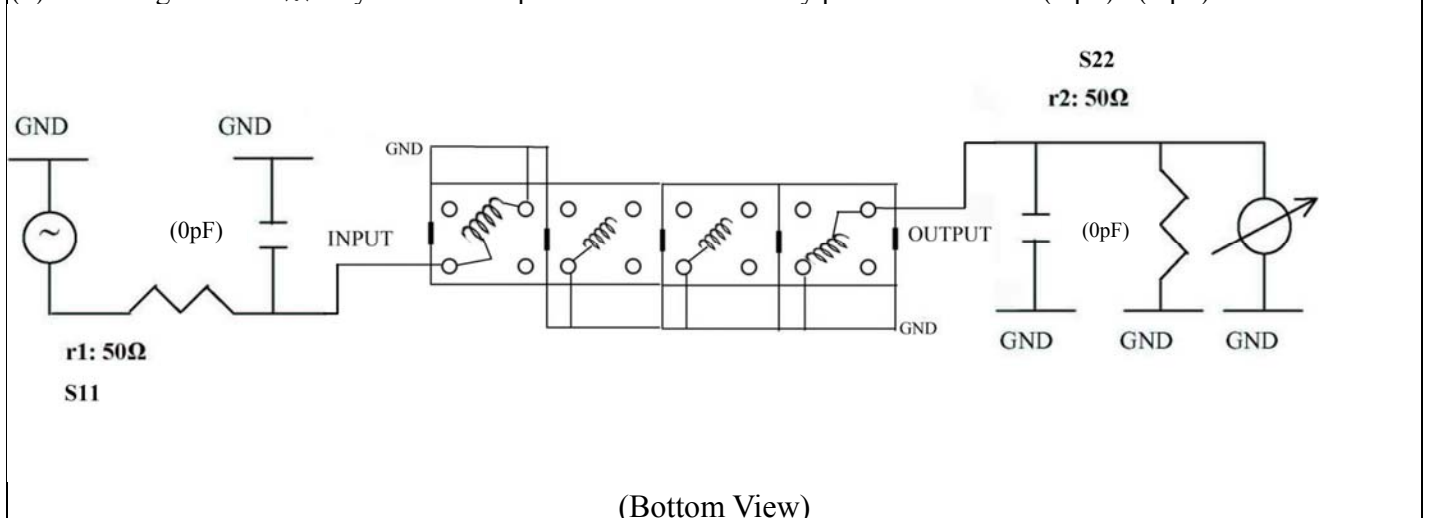
Customer Name		Temwell's Part No.	K4RF-495M-20M
Approval No. /dated	0904185 CD	Temwell's Print Name.	K4RF 495M
Work Instruction No.	200904185CD	Date	May.05.2009



(3) Electric Characteristic			
Item		Specify	Performance
Center Freq.(Fo) +/- 0.5 %		495 MHz	495 MHz
Insertion Loss		Typ. 4.0 dB	3.23 dB
-3 dB Bandwidth		Typ. 20 MHz	23.4 MHz
Sensitivity (Attenuation)	Fo - 50 MHz	Typ. 51 dBc	54 dBc
	Fo + 50 MHz	Typ. 46 dBc	49 dBc
	Fo - ()MHz	Typ. dBc	dBc
	Fo + ()MHz	Typ. dBc	dBc
Return Loss		Min. 12 dB	19.4 dB
Ripple		< 1 dB	dB
Impedance		In / Out : 50 Ω	In / Out : 50 Ω
(4) Torque for Tuning Screw		> 60gf · cm	

(5) Temperature Condition:	
Operating Temperature	0°C ~ +60°C
Storage Temperature	-20°C ~ +70°C
(6) Input Power	> 0.5Watt

(7) Measuring Circuit: ※Easy to match Impedance S11/S22 50Ω by parallel with about(0pF) / (0pF).



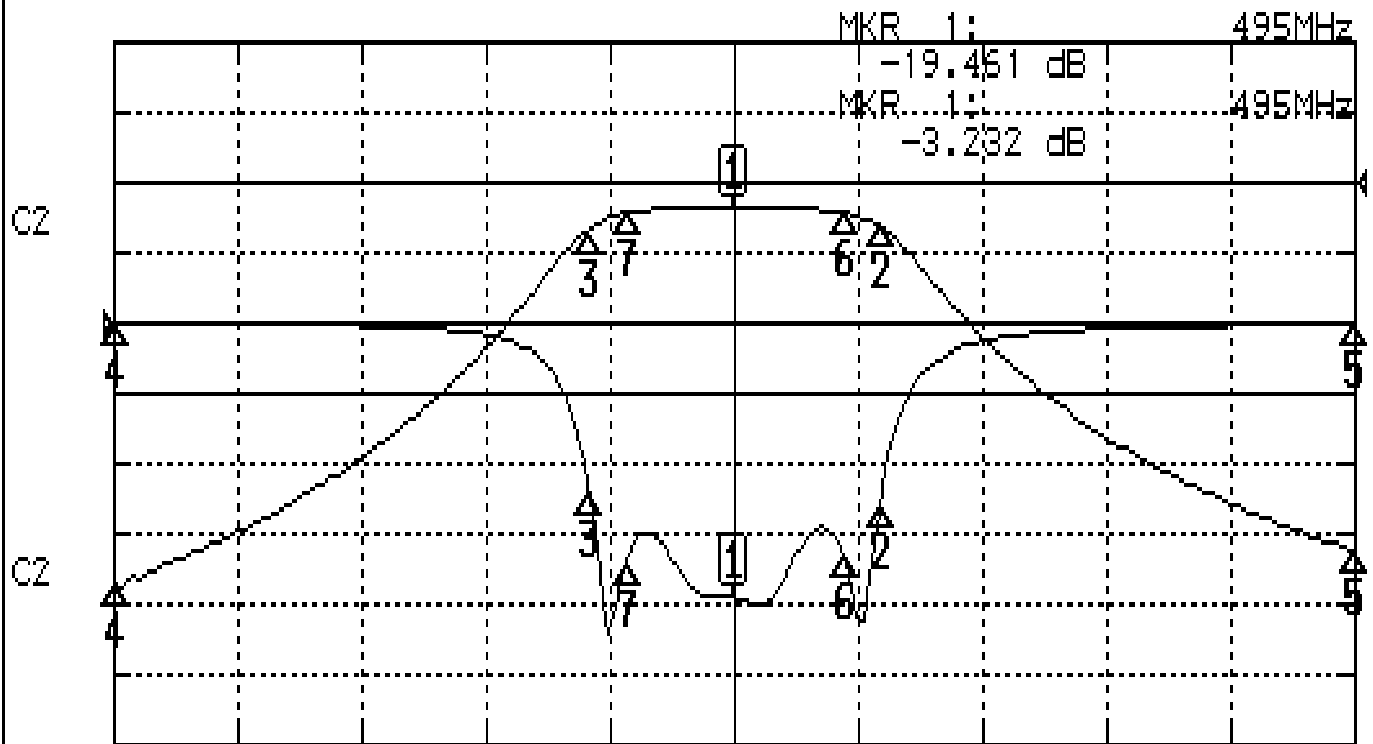
Approval	Supervisor	Designer	Aperture size
C.Y.Chang	C.S.Chang	W.W.Wang	5R4(3.8*4.2)(4.21) 5HW024RB3

TEMWELL CORPORATION

Performance-K4RF-495M-20M

200904185CD

CH1 S11 LOG MAG REF 0.000 dB 5.000 dB/
CH2 S21 LOG MAG REF 0.000 dB 10.000 dB/



CENTER 495MHz

[10.00 dBm]

SPAN 100MHz

CH1 MARKER LIST

Marker	Frequency (MHz)	Magnitude (dB)
1:	495.000	-19.461
2:	506.833	-12.687
3:	483.416	-12.215
4:	445.000	0.020
5:	545.000	-0.041
6:	503.833	-16.510
7:	486.333	-17.101
8:		
9:		
10:		

CH2 MARKER LIST

Marker	Frequency (MHz)	Magnitude (dB)
1:	495.000	-3.232
2:	506.833	-6.255
3:	483.416	-6.295
4:	445.000	-7.476
5:	545.000	-2.415
6:	503.833	-4.279
7:	486.333	-4.260
8:		
9:		
10:		