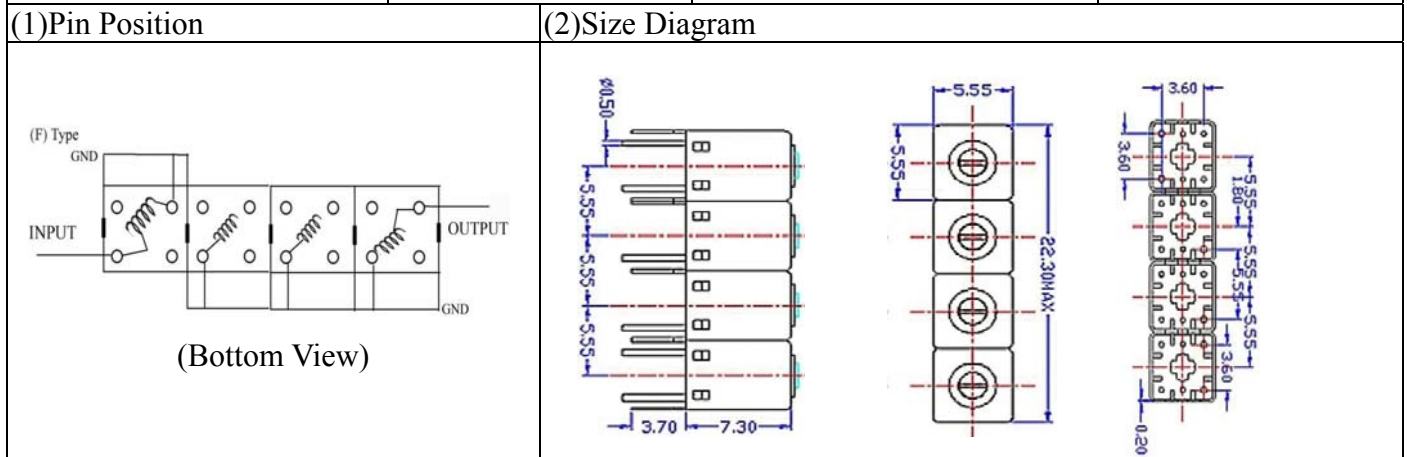


# VHF UHF Helical Filter Specification Sheet

Customer Name		Temwell's Part No.	K4RF-705M-20M
Approval No. /dated	0905059CD	Temwell's Print Name.	K4RF 705M
Work Instruction No.	200905059CD	Date	Jun.02.2009



(3) Electric Characteristic

Item	Specify	Performance
Center Freq.(Fo) +/- 0.5 %	705 MHz	705 MHz
Insertion Loss	Typ. 4.5 dB	3.78 dB
-3 dB Bandwidth	Typ. 20 MHz	23.7 MHz
Sensitivity (Attenuation)	Fo - 50 MHz	Typ. 50 dBc
	Fo + 50 MHz	Typ. 43 dBc
	Fo - ( )MHz	Typ. dBc
	Fo +( )MHz	Typ. dBc
Return Loss	Min. 12 dB	20.8 dB
Ripple	< 1 dB	dB
Impedance	In / Out : 50 Ω	In / Out : 50 Ω

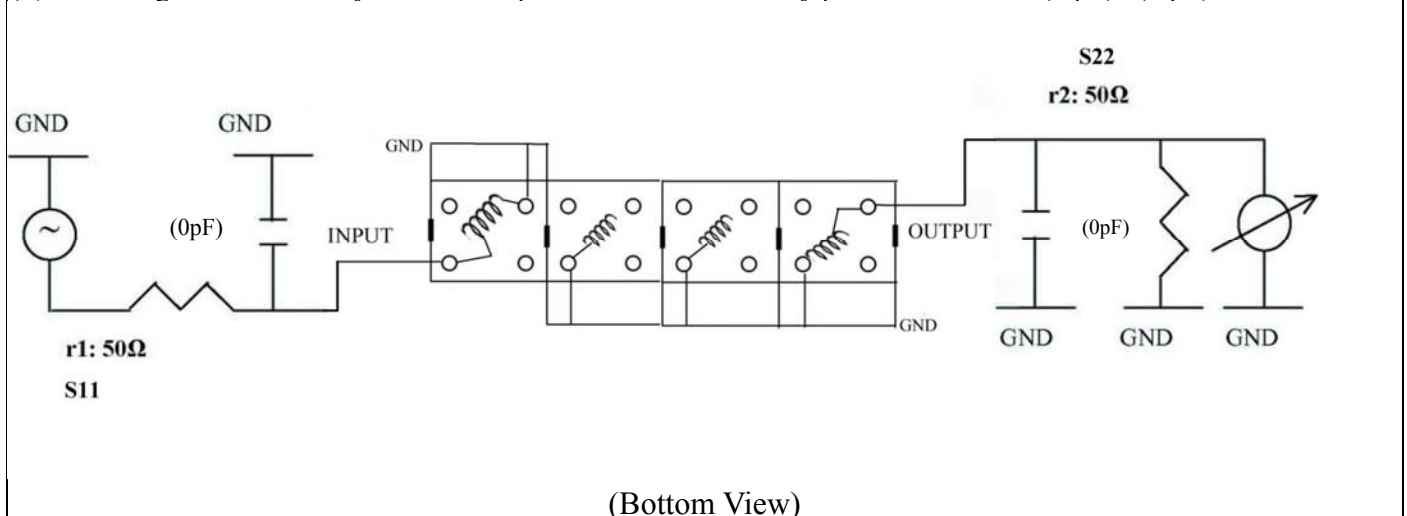
(4) Torque for Tuning Screw > 100gf · cm

(5) Temperature Condition:

Operating Temperature	0°C ~ +60°C
Storage Temperature	-20°C ~ +70°C

(6) Input Power > 0.5Watt

(7) Measuring Circuit: ※Easy to match Impedance S11/S22 50Ω by parallel with about( 0pF) / ( 0pF).

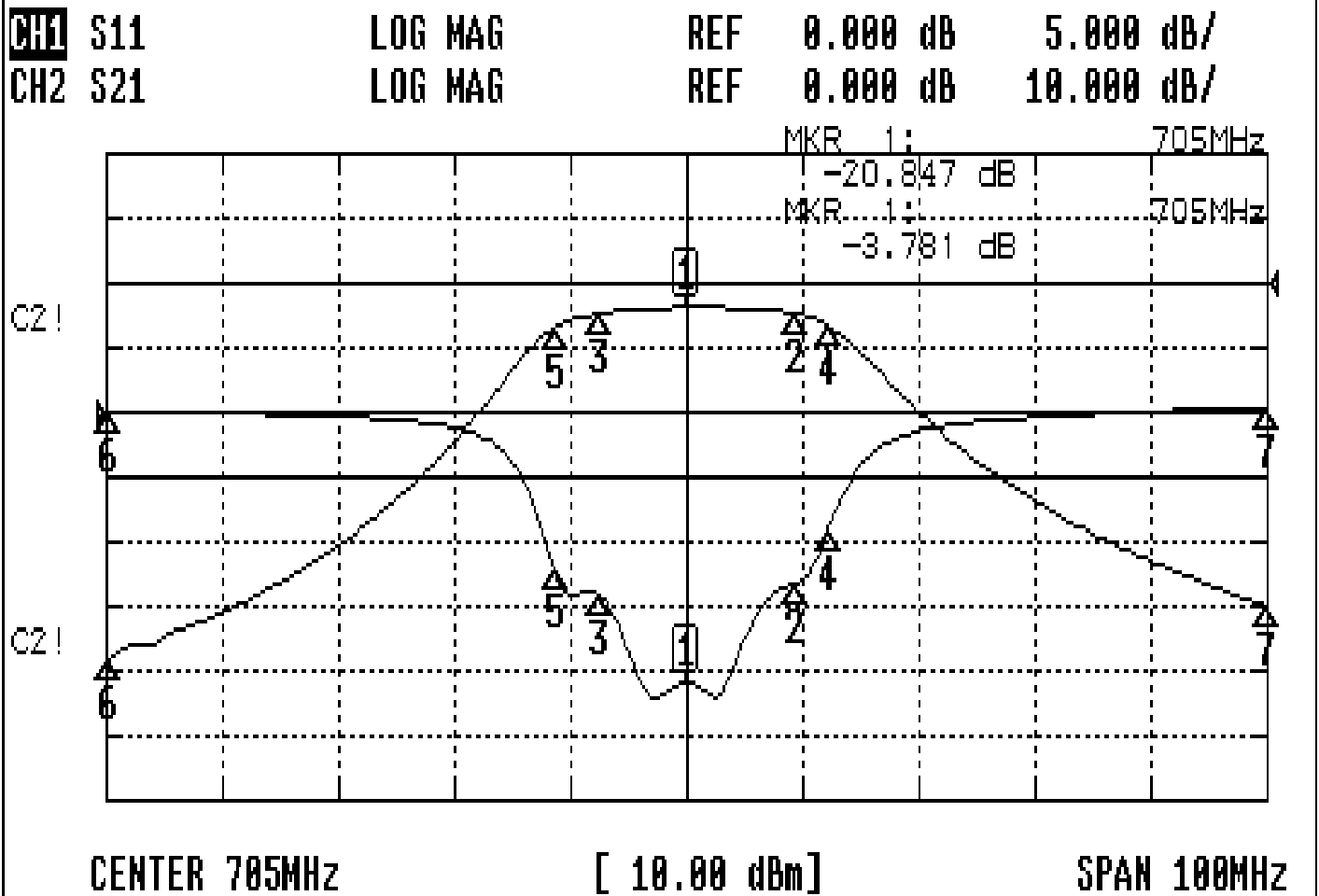


Approval	Supervisor	Designer	Aperture size
C.Y.Chang	C.S.Chang	J.F.Lin	5R4(3.8*3.7)(3.71) 5HW024LB3

TEMWELL CORPORATION

# Performance-K4RF-705M-20M

## 200905059CD



### CH1 MARKER LIST

1:	705.000MHz	-20.847	dB
2:	714.333MHz	-13.266	dB
3:	697.500MHz	-14.140	dB
4:	717.333MHz	-8.989	dB
5:	693.666MHz	-12.230	dB
6:	655.000MHz	0.017	dB
7:	755.000MHz	0.210	dB
8:			
9:			
10:			

### CH2 MARKER LIST

1:	705.000MHz	-3.783	dB
2:	714.333MHz	-4.745	dB
3:	697.500MHz	-4.706	dB
4:	717.333MHz	-16.666	dB
5:	693.666MHz	-16.742	dB
6:	655.000MHz	-57.498	dB
7:	755.000MHz	-50.004	dB
8:			
9:			
10:			