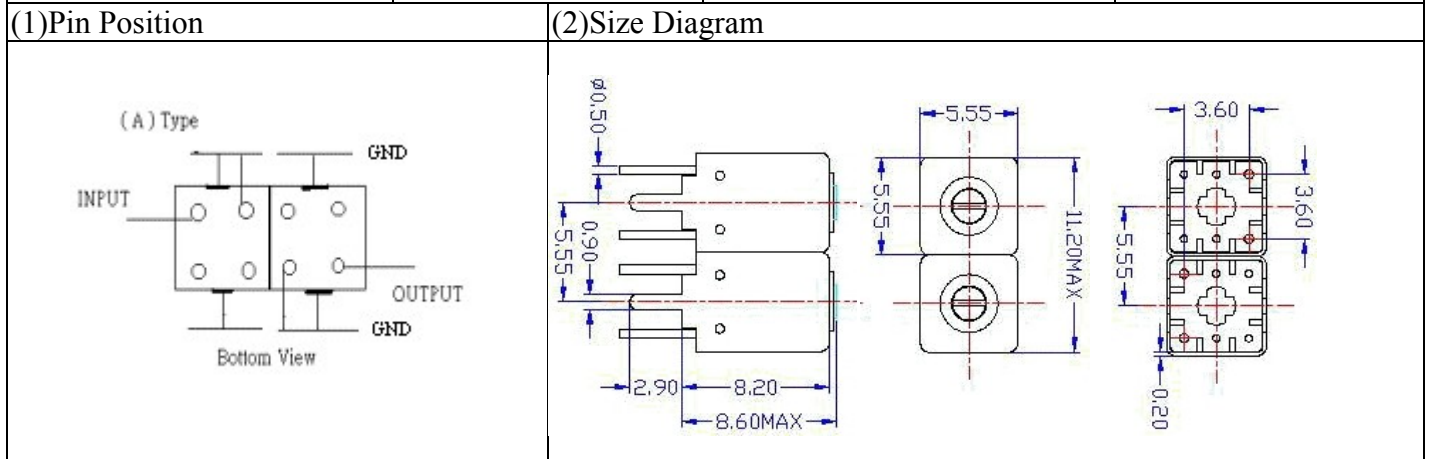


VHF UHF Helical Filter Specification Sheet

Customer Name		Temwell's Part No.	TDW2896A-425M
Approval No. /dated	0806007CD	Temwell's print name.	2896A 425M
Work Instruction No.	0806007CD	Date	June.09.2008



(3) Electric Chararistic

Item	Specify	Performance	
Center Freq.(Fo) +/- 0.5 %	425 MHz	425 MHz	
Tunable Range:	425±5 MHz	425±5 MHz	
Insertion Loss	Typ. 2.5 dB	1.47 dB	
-3 dB Bandwidth	Typ. 20 MHz	25.1 MHz	
Sensitivity (Attenuation)	Fo - 50 MHz	Typ. 17 dBc	20 dBc
	Fo + 50 MHz	Typ. 25 dBc	28 dBc
	Fo - ()MHz	Typ. dBc	dBc
	Fo + ()MHz	Typ. dBc	dBc
Return Loss	Min. 12 dB	20.8 dB	
Ripple	< 1 dB	dB	
Impedance	In / Out : 50 Ω	In / Out : 50 Ω	

(4) Torque for Tuning Screw > 60gf · cm

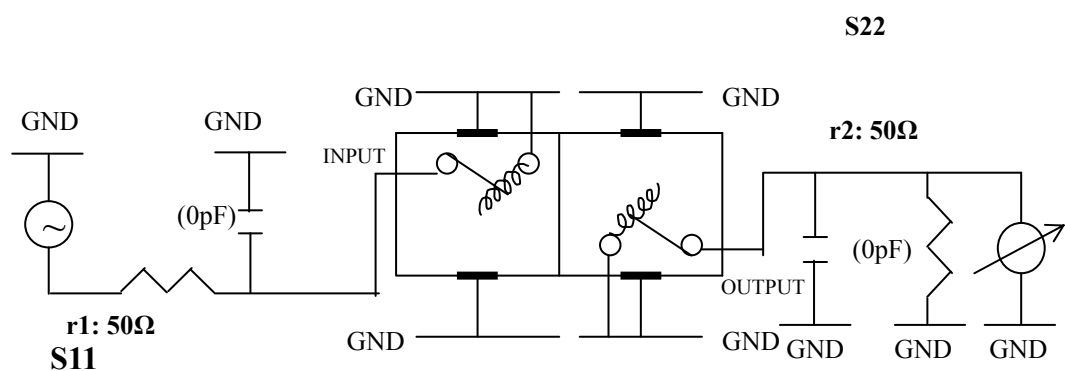
(5) Temperature Condition:

Operating Temperature 0°C ~ +60°C

Storage Temperature -20°C ~ +70°C

(6) Input Power > 0.5Watt

(7) Measuring Circuit: ※Easy to match Impedance 50Ω/ by parallel with about (0) pF.



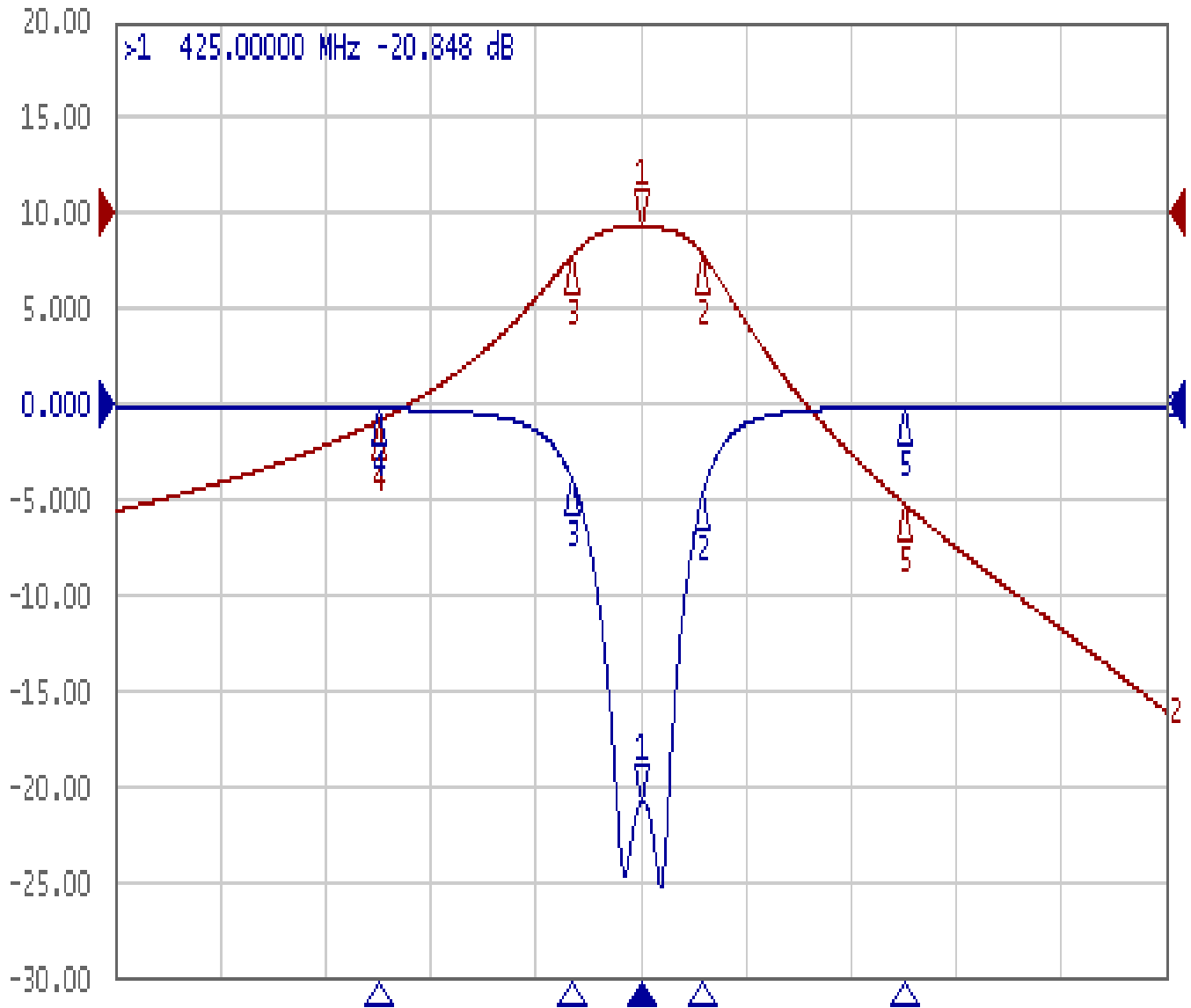
Approval	Supervisor	Designer	Aperture size
C.Y.Chang	C.S.Chang	C.S.Chang	5W2S(3.8*3.5) 5HW020RB3.5

TEMWELL CORPORATION

Performance-TDW2896A-425M

0806007CD

Tr1 S11 Log Mag 5.000dB/ Ref 0.000dB [F3]
Tr2 S21 Log Mag 10.00dB/ Ref 0.000dB [F3]



1 Center 425 MHz

IFBW 10 kHz

Span 200 MHz



Ch1	Tr1	S11	>1	425.00000	MHz	-20.848	dB
Ch1	Tr1	S11	2	436.91050	MHz	-4.5931	dB
Ch1	Tr1	S11	3	411.82200	MHz	-3.8513	dB
Ch1	Tr1	S11	4	375.00000	MHz	-0.2285	dB
Ch1	Tr1	S11	5	475.00000	MHz	-0.1756	dB
Ch1	Tr2	S21	1	425.00000	MHz	-1.4767	dB
Ch1	Tr2	S21	2	436.91050	MHz	-4.4622	dB
Ch1	Tr2	S21	3	411.82200	MHz	-4.5658	dB
Ch1	Tr2	S21	4	375.00000	MHz	-21.749	dB
Ch1	Tr2	S21	5	475.00000	MHz	-30.390	dB