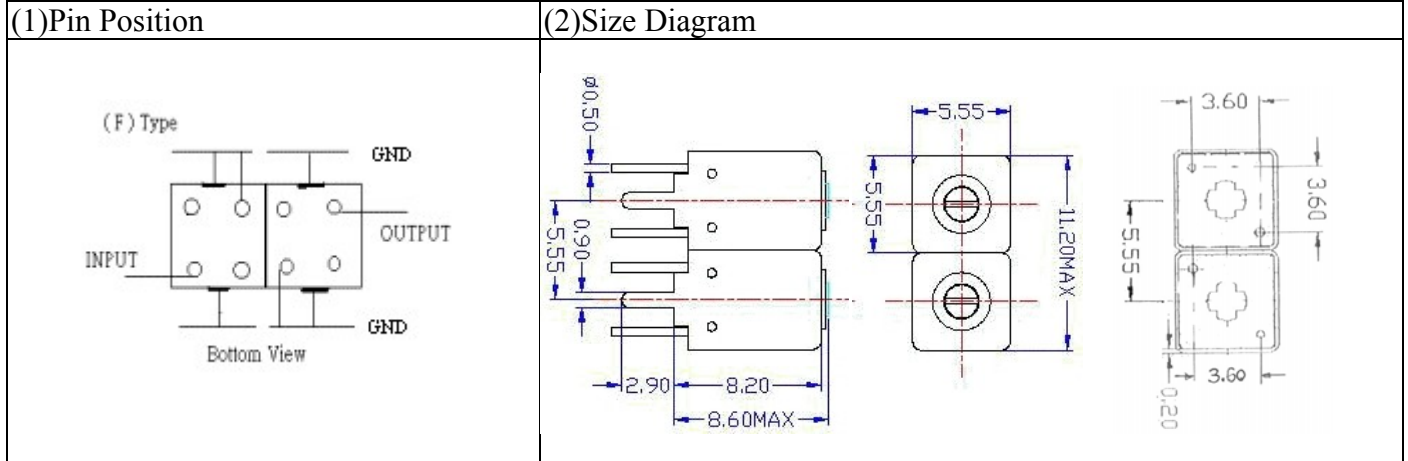


N VHF UHF Helical Filter Specification Sheet

Customer Name		Temwell's Part No.	TDW2900F-596M
Approval No. /dated	0806057APR	Temwell's print name.	2900F 596M
Work Instruction No.	0806057CD	Date	June.11.2008



(3) Electric Charasteric

Item	Specify	Performance
Center Freq.(Fo) +/- 0.5 %	596 MHz	596 MHz
Tunable Range:	596±5 MHz	596±5 MHz
Insertion Loss	Typ. 2.5 dB	1.93 dB
-1 dB Bandwidth	Typ. 14 MHz	16.7 MHz
-3 dB Bandwidth	Typ. 24 MHz	26.3 MHz
Sensitivity (Attenuation)	Fo - 220 MHz	Typ. 40 dBc
	Fo + 220 MHz	Typ. 47 dBc
	Fo - (50)MHz	Typ. 17 dBc
	Fo + (50)MHz	Typ. 22 dBc
Return Loss	Min. 12 dB	30.8 dB
Ripple	< 1 dB	
Impedance	In / Out : 50 Ω	In / Out : 50 Ω

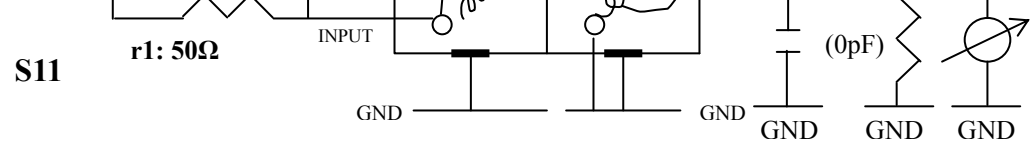
(4) Torque for Tuning Screw > 60gf · cm

(5) Temperature Condition:

Operating Temperature	0°C ~ +60°C
Storage Temperature	-20°C ~ +70°C

(6) Input Power > 0.5Watt

(7) Measuring Circuit: ※Easy to match Impedance 50Ω/ by parallel with about (0) pF.



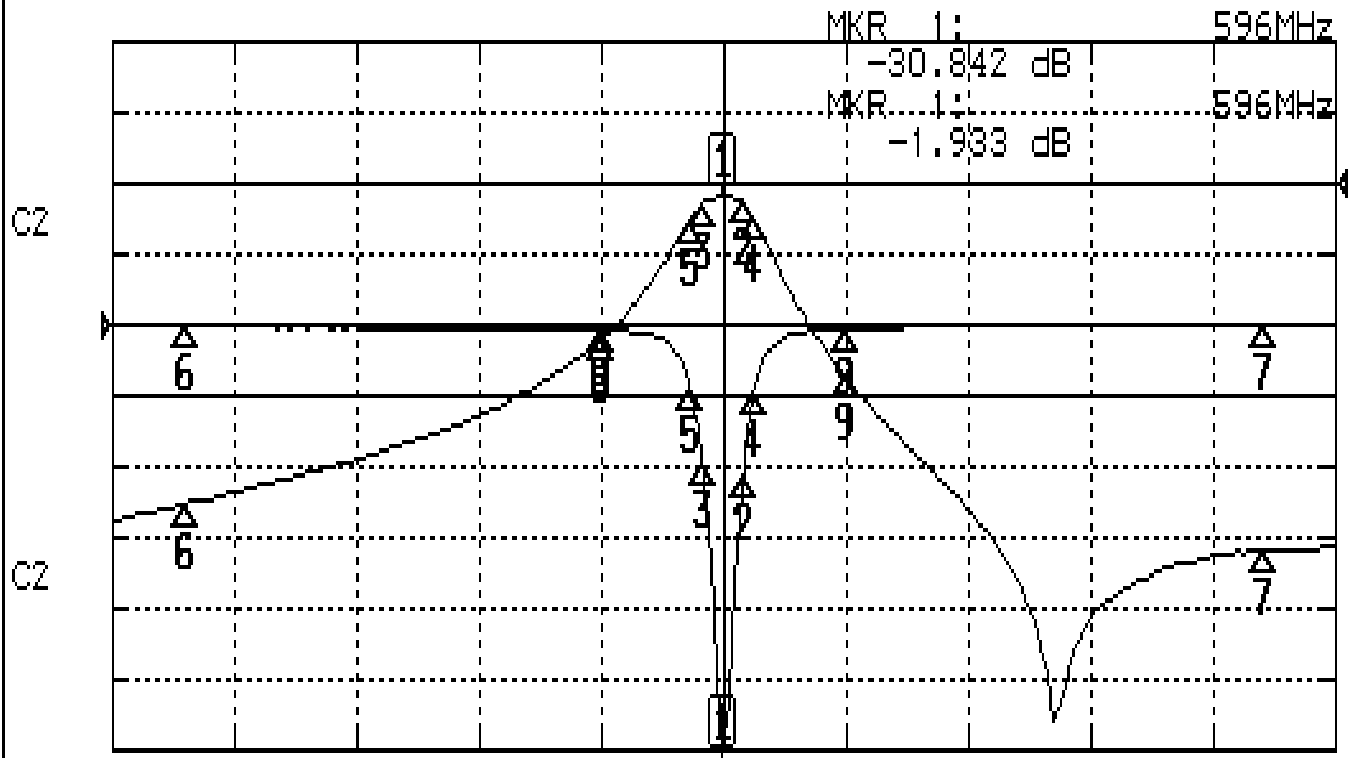
(Bottom View)

Approval	Supervisor	Designer	Aperture size
C.Y.Chang	C.S.Chang	P.H.Chiang	5W2(3.8*3.5) 5HW020RB3.5

Performance-TDW2900F-596M

0806057CD

CH1 S11 LOG MAG REF 0.000 dB 5.000 dB/
CH2 S21 LOG MAG REF 0.000 dB 10.000 dB/



CENTER 596MHz

[10.00 dBm]

SPAN 500MHz

CH1 MARKER LIST

1	596.000MHz	-30.842	dB
2	604.333MHz	-10.000	dB
3	607.666MHz	-9.000	dB
4	608.916MHz	-14.632	dB
5	608.666MHz	-14.400	dB
6	607.000MHz	-0.133	dB
7	616.000MHz	-0.077	dB
8	646.000MHz	-0.227	dB
9	646.000MHz	-0.227	dB

CH2 MARKER LIST

1	596.000MHz	-1.933	dB
2	604.333MHz	-2.000	dB
3	607.666MHz	-2.000	dB
4	608.916MHz	-4.951	dB
5	608.666MHz	-5.200	dB
6	616.000MHz	-11.927	dB
7	646.000MHz	-21.901	dB
8	646.000MHz	-27.278	dB