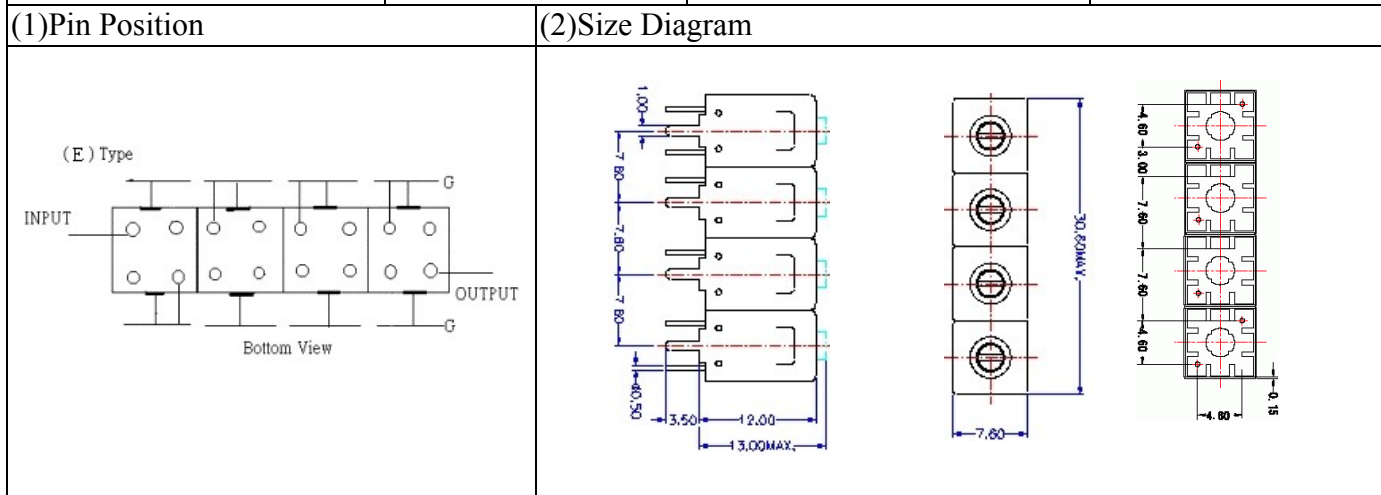


# VHF UHF Helical Filter Specification Sheet

Customer Name		Temwell's Part No.	TFL64224E-713M
Approval No. /dated	0802002APR	Temwell's Print name	64224E 713M
Work Instruction No.	0802002CD	Date	Mr.24.2008



(3) Electric Characteristic

Item	Specify	Performance	
Center Freq.(Fo) +/- 0.5 %	713 MHz	713 MHz	
Insertion Loss	Typ. 4.0 dB	3.11 dB	
-3 dB Bandwidth	Typ. 17 MHz	21.1 MHz	
Sensitivity (Attenuation)	Fo - 30 MHz	Typ. 35 dBc	38 dBc
	Fo + 30 MHz	Typ. 40 dBc	43 dBc
	Fo - ( )MHz	Typ. dB	dB
	Fo +( )MHz	Typ. dB	dB
Return Loss	Min. 12 dB	19.8 dB	
Ripple	< 1 dB	dB	
Impedance	In / Out : 75 Ω	In / Out : 75 Ω	

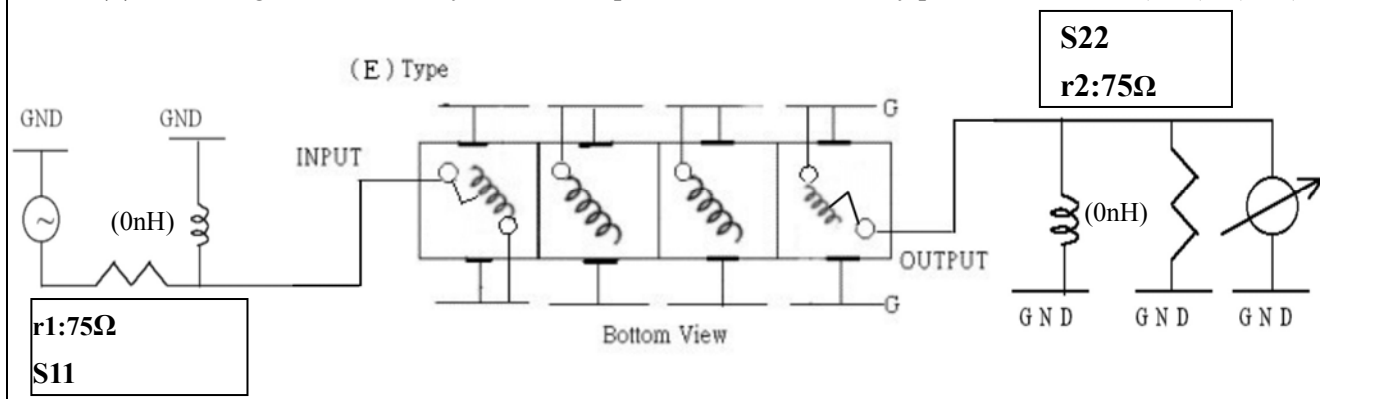
(4) Torque for Tuning Screw > 100gf · cm

(5) Temperature Condition:

Operating Temperature	0°C ~ +60°C
Storage Temperature	-20°C ~ +70°C

(6) Input Power > 1Watt

(7) Measuring Circuit: ※Easy to match Impedance S11/S22 75Ω by parallel with about(0nH) / (0nH)



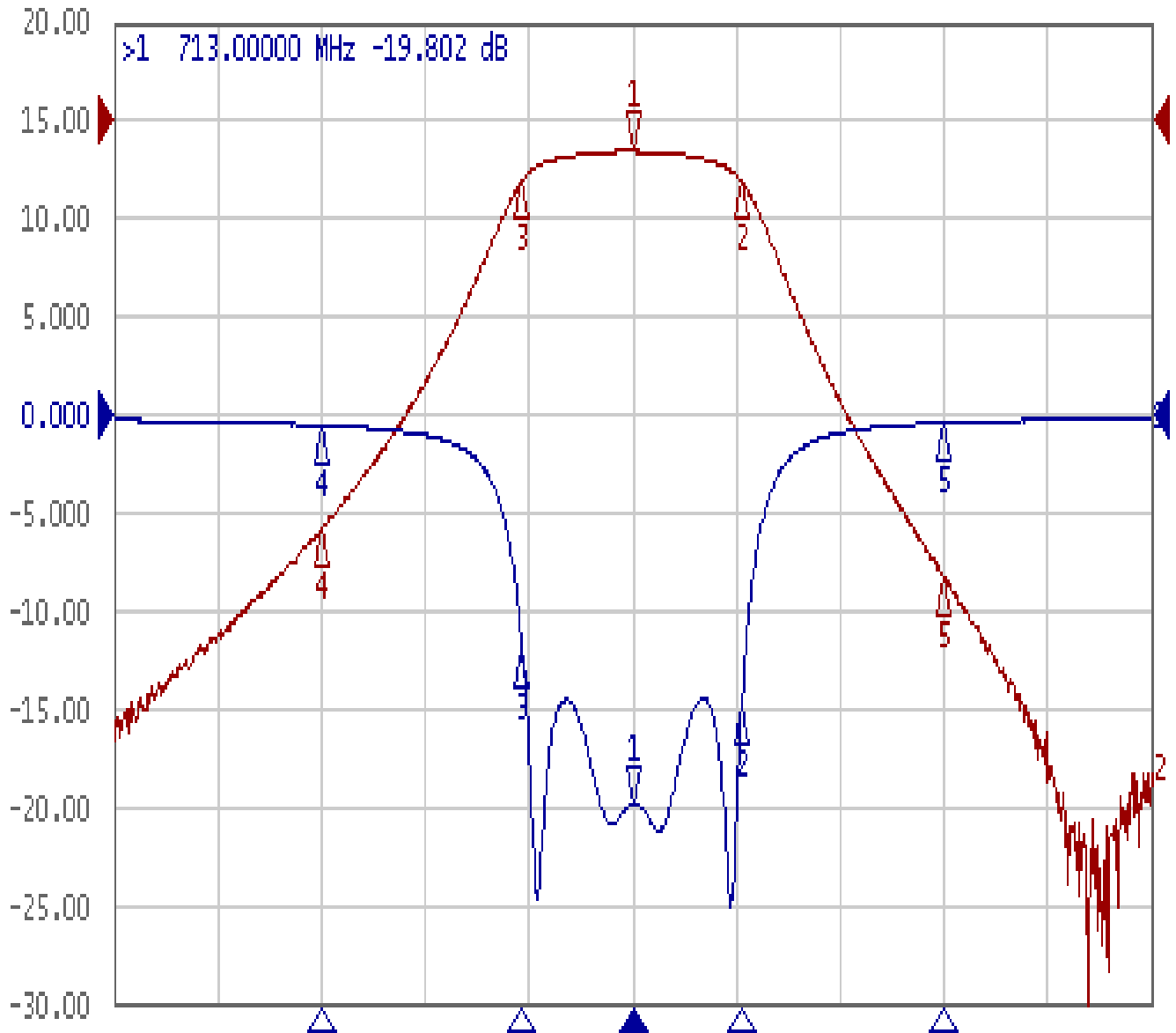
Approval	Supervisor	Designer	Aperture size
C.Y.Chang	C.S.Chang	C.S.Chiang	7H4(4*4.65)F*(4.0B) 7H046LB4 聚 3

TEMWELL CORPORATION

# Performance-TFL64224E-713M

## 0802002CD

▶ Tr1 S11 Log Mag 5.000dB/ Ref 0.000dB [F2]  
Tr2 S21 Log Mag 10.00dB/ Ref 0.000dB [F2]



1 Center 713 MHz

IFBW 10 kHz

Span 100 MHz



Ch1	Tr1	S11	>1	713.00000	MHz	-19.802	dB
Ch1	Tr1	S11	2	723.47550	MHz	-14.938	dB
Ch1	Tr1	S11	3	702.34900	MHz	-11.902	dB
Ch1	Tr1	S11	4	683.00000	MHz	-0.5158	dB
Ch1	Tr1	S11	5	743.00000	MHz	-0.3880	dB
Ch1	Tr2	S21	1	713.00000	MHz	-3.1176	dB
Ch1	Tr2	S21	2	723.47550	MHz	-6.1477	dB
Ch1	Tr2	S21	3	702.34900	MHz	-6.0830	dB
Ch1	Tr2	S21	4	683.00000	MHz	-41.701	dB
Ch1	Tr2	S21	5	743.00000	MHz	-46.687	dB