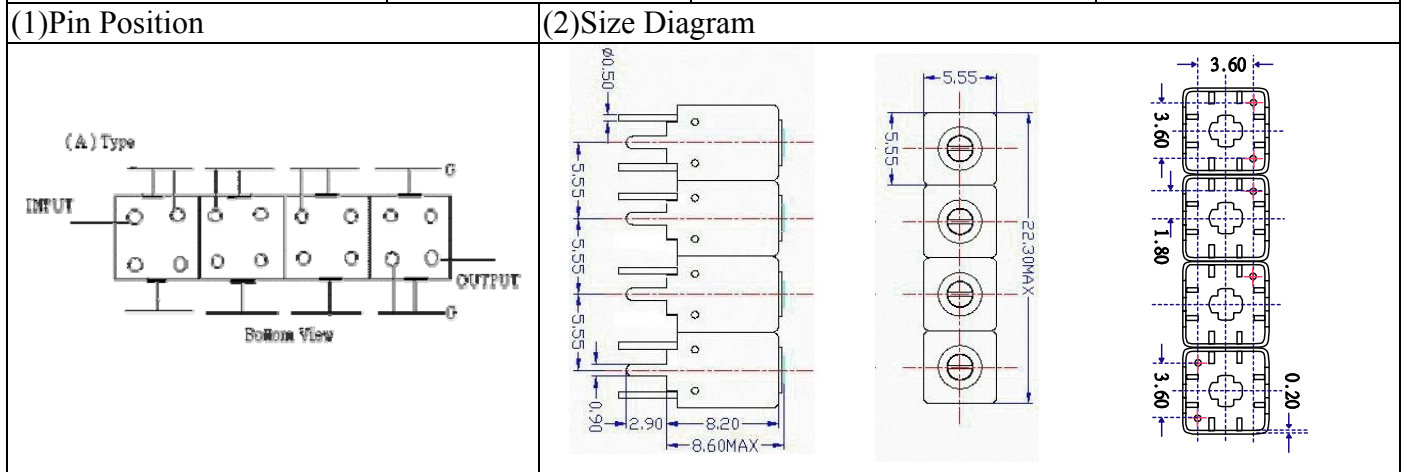


VHF UHF Helical Filter Specification Sheet

Customer Name		Temwell's Part No.	TFW4423A-420M
Approval No. /dated	201801042CD	Temwell,s print Name	4423A 420M
Work Instruction No.	201801042CD	Date	Feb.14.2018



(3)Electric Charasteric

Item	Specify	Performance	
Center Freq.(Fo) +/- 0.5 %	420 MHz	420 MHz	
Insertion Loss	Typ. 3.5 dB	2.57 dB	
-3 dB Bandwidth	Typ. 18 MHz	23.5 MHz	
Sensitivity (Attenuation)	Fo - 50 MHz	Typ. 55 dBc	60 dBc
	Fo + 50 MHz	Typ. 41 dBc	46 dBc
	Fo - ()MHz	Typ. dBc	dBc
	Fo +()MHz	Typ. dBc	dBc
Return Loss	Min. 12 dB	48.1 dB	
Ripple	< 1 dB	dB	
Impedance	In / Out : 50 Ω	In / Out : 50 Ω	

(4)Torque for Tuning Screw > 60gf • cm

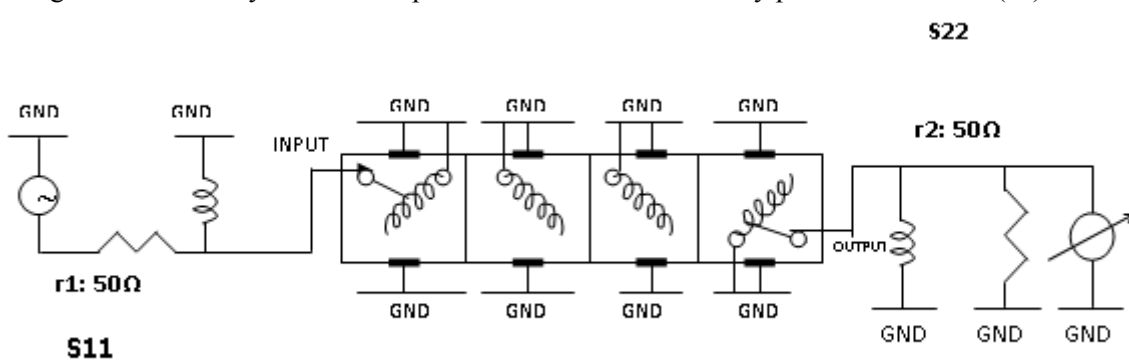
(5)Temperature Condition:

Operating Temperature 0°C ~ +60°C

Storage Temperature -20°C ~ +70°C

(6)Input Power > 0.5Watt

(7) Measuring Circuit: ※Easy to match Impedance S11/S22 50Ω/50Ω by parallel with about(- -).



(Bottom View)

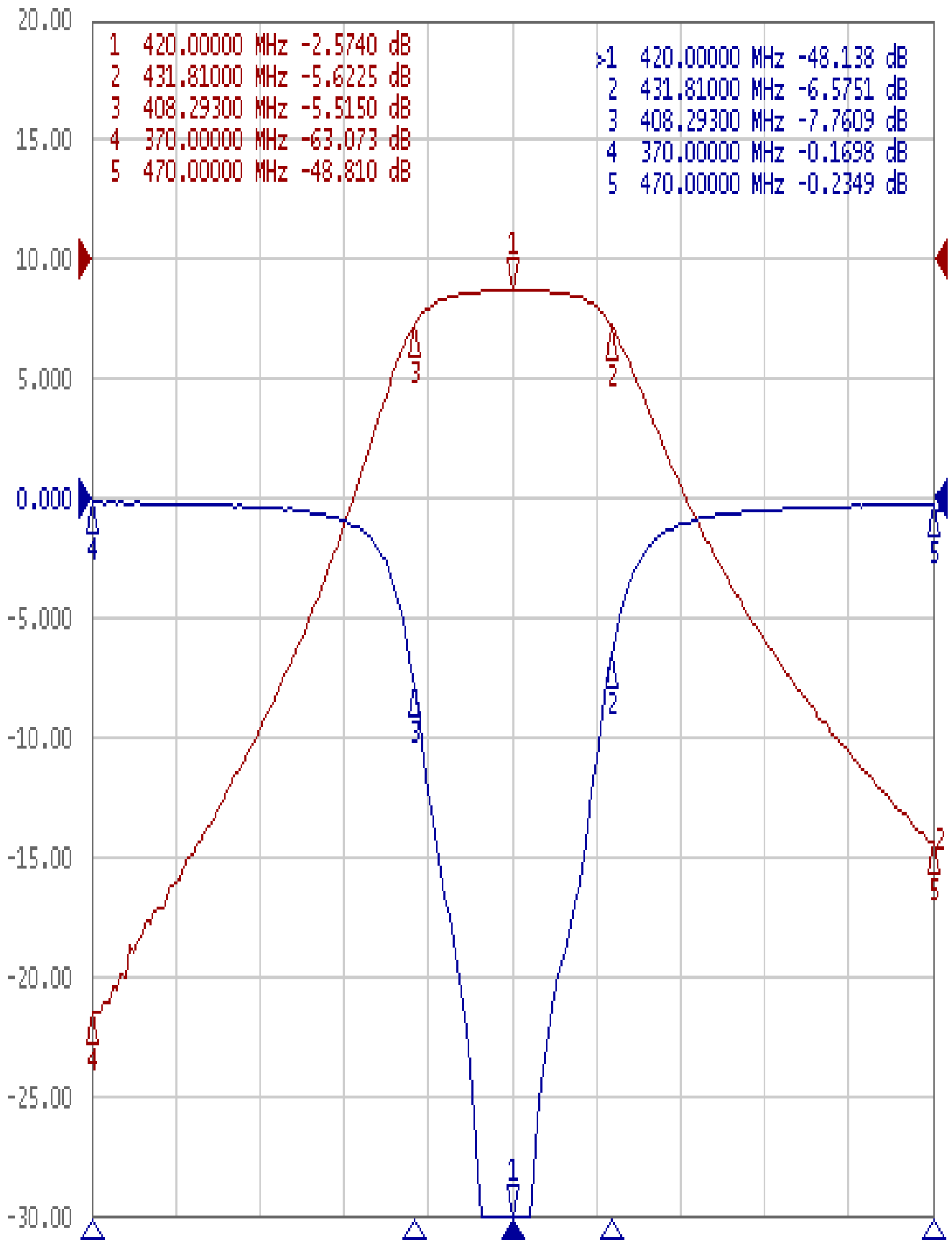
Approval	Supervisor	Designer	Aperture size
C.Y.Chang	C.K.Chang	W.W.Wang	5W4S(3.8*4.0)(4.03) 5HW020RB3.5

TEMWELL CORPORATION

Performance-TFW4423A-420M

201801042CD

Tr1 S11 Log Mag 5.000dB/ Ref 0.000dB [F2]
Tr2 S21 Log Mag 10.000dB/ Ref 0.000dB [F2]



1 Center 420 MHz

IFBW 70 kHz

Span 100 MHz Cor !