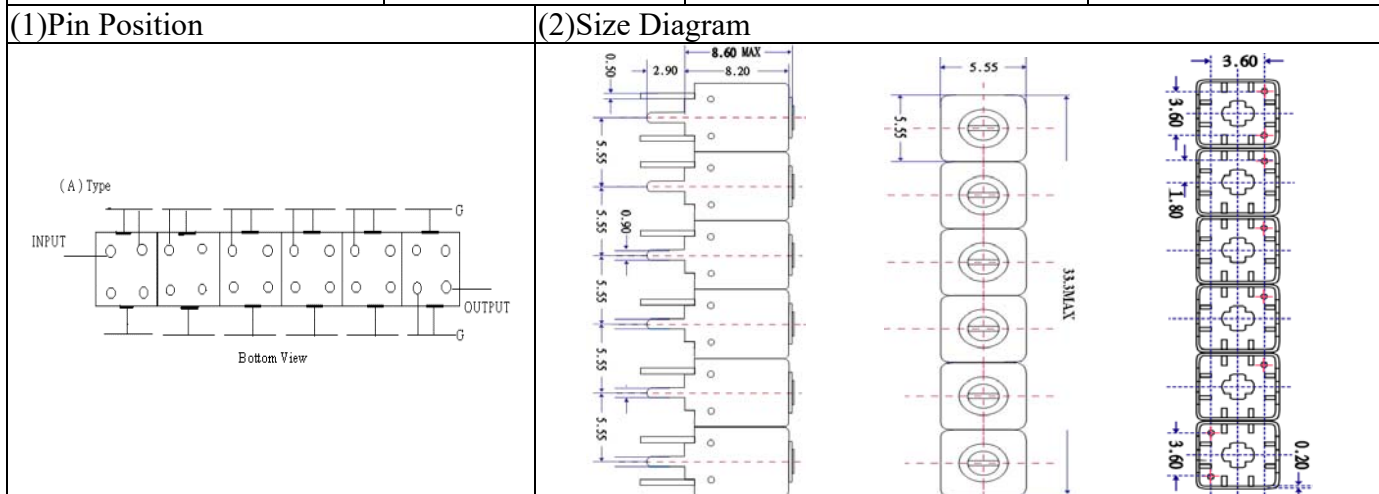


VHF UHF Helical Filter Specification Sheet

Customer Name		Temwell's Part No.	TSW6412A-1882.5M
Approval No. /dated		Temwell,s print Name	6412A 1882.5M
Work Instruction No.	201911105CD	Date	Jun.08.2020



(3) Electric Characteristic

Item	Specify	Performance
Center Freq.(Fo) +/- 0.5 %	1882.5 MHz	1882.5 MHz
Insertion Loss	Typ. 5.5 dB	4.69 dB
-3 dB Bandwidth	Typ. 65 MHz	70.0 MHz
Sensitivity (Attenuation)	Fo - 100 MHz	Typ. 62 dBc
	Fo + 100 MHz	Typ. 51 dBc
	Fo - ()MHz	Typ. dBc
	Fo +()MHz	Typ. dBc
Return Loss	Min. 12 dB	28.4 dB
Ripple	< 1 dB	dB
Impedance	In / Out : 50 Ω	In / Out : 50 Ω

(4) Torque for Tuning Screw > 60gf • cm

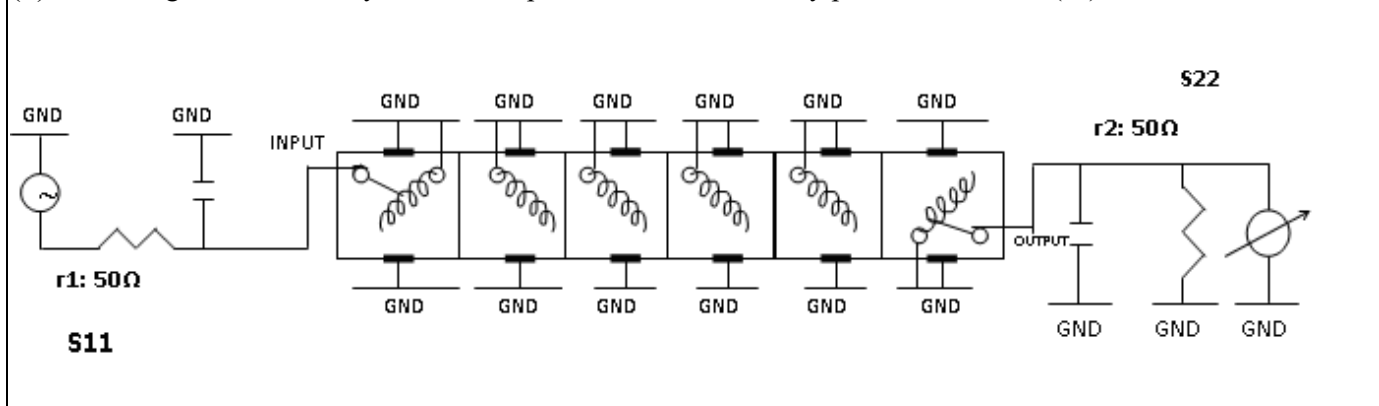
(5) Temperature Condition:

Operating Temperature 0°C ~ +60°C

Storage Temperature -20°C ~ +70°C

(6) Input Power > 0.5Watt

(7) Measuring Circuit: ※Easy to match Impedance S11/S22 50Ω by parallel with about(- -).



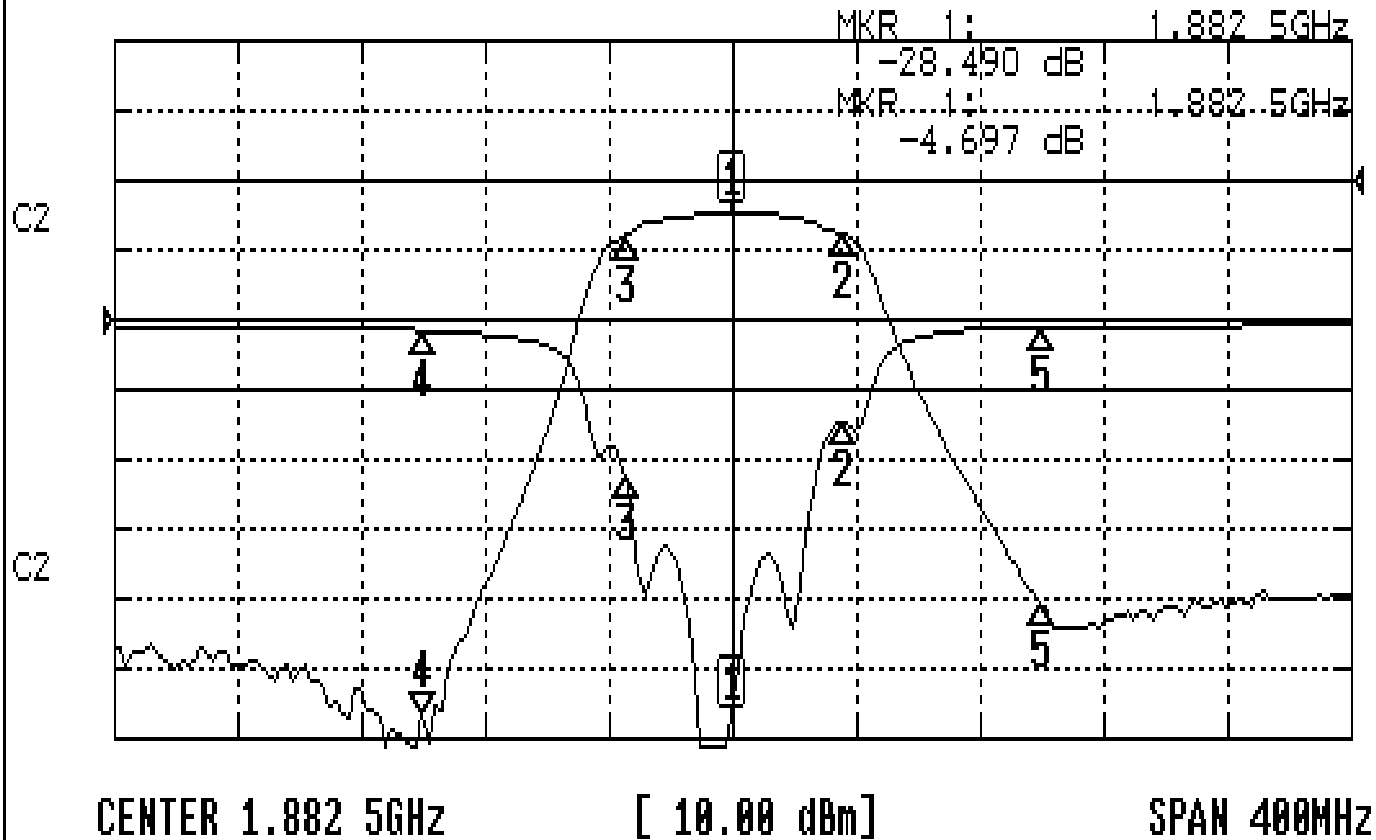
Approval	Supervisor	Designer	Aperture size
C.C.Chang	C.K.Chang	C.H.Yeh	5W6S(3.8*4.0)(4.02) 5HW046LB3.2 (J1)

TEMWELL CORPORATION

Performance-TSW6412A-1882.5M

201911105CD

CH1 S11 LOG MAG REF 0.000 dB 5.000 dB/
CH2 S21 LOG MAG REF 0.000 dB 10.000 dB/



CH1 MARKER LIST

Marker	Freq (GHz)	Magnitude (dB)
1	1.882	-28.490
2	1.917	-7.381
3	1.847	-11.198
4	1.782	-0.769
5	1.982	-0.568

CH2 MARKER LIST

Marker	Freq (GHz)	Magnitude (dB)
1	1.882	-4.697
2	1.917	-7.700
3	1.847	-7.713
4	1.782	-76.720
5	1.982	-60.695