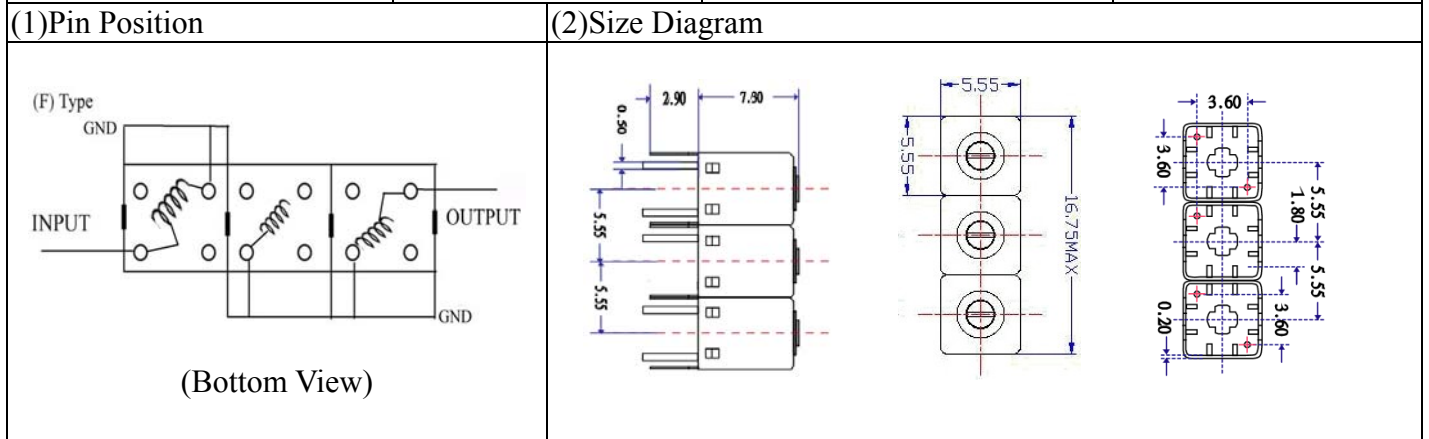


VHF UHF Helical Filter Specification Sheet

Customer Name		Temwell's Part No.	TTR3674F-625M
Approval No. /dated	201505090CD	Temwell's Print Name	3674F 625M
Work Instruction No.	201505090CD	Date	Oct.22.2015



(3) Electric Characteristic

Item	Specify	Performance	
Center Freq.(Fo) +/- 0.5 %	625 MHz	625 MHz	
Insertion Loss	Typ. 3.5 dB	2.78 dB	
-3 dB Bandwidth	Typ. 20 MHz	26.5 MHz	
Sensitivity (Attenuation)	Fo - 50 MHz	Typ. 28 dBc	33 dBc
	Fo + 50 MHz	Typ. 26 dBc	31 dBc
	Fo - ()MHz	Typ. dBc	dBc
	Fo + ()MHz	Typ. dBc	dBc
Return Loss	Min. 12 dB	21.3 dB	
Ripple	< 1 dB	dB	
Impedance	In / Out : 50 Ω	In / Out : 50 Ω	

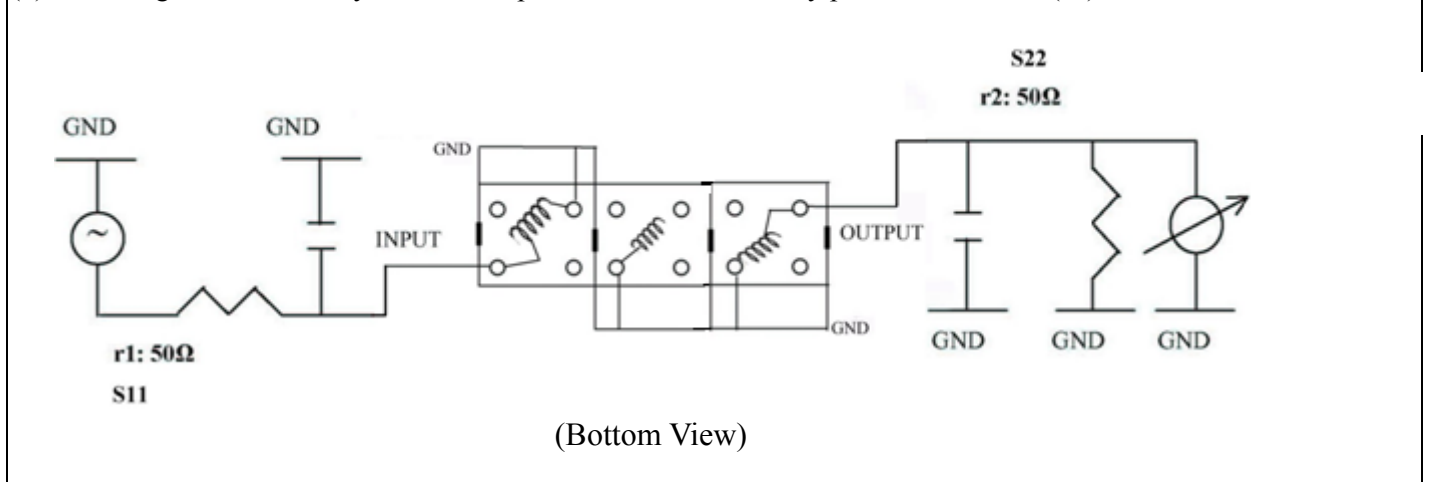
(4) Torque for Tuning Screw > 60gf • cm

(5) Temperature Condition:

Operating Temperature	0°C ~ +60°C
Storage Temperature	-20°C ~ +70°C

(6) Input Power > 0.5Watt

(7) Measuring Circuit: ※Easy to match Impedance S11/S22 50Ω/ by parallel with about(- -).



Approval	Supervisor	Designer	Aperture size
C.Y.Chang	C.K.Chang	W.W.W.ang	5R3S(3.8*4.2)(5.18) 5H024RB3

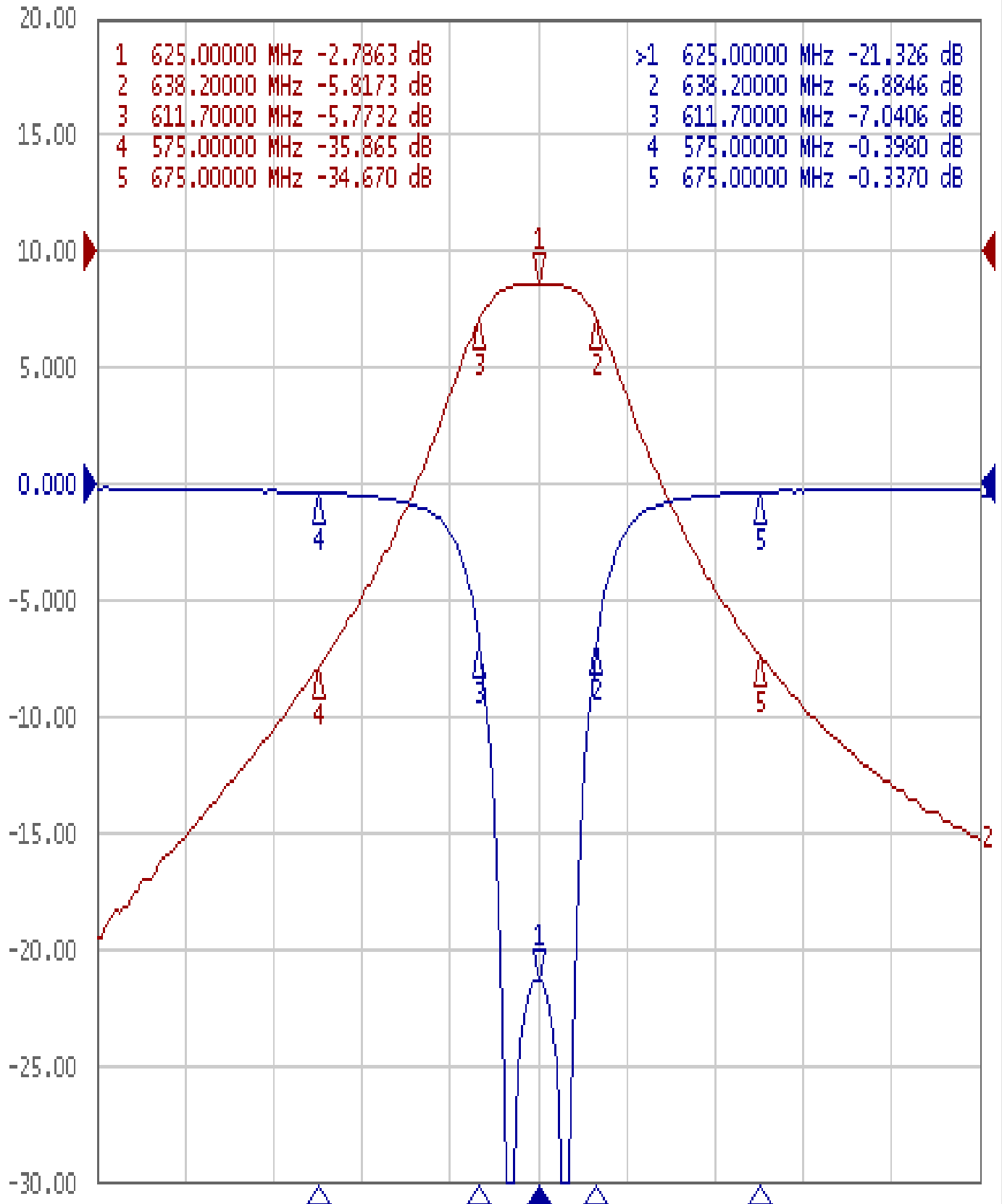
TEMWELL CORPORATION

Performance-TTR3674F-625M

201505090CD

Tr1 S11 Log Mag 5.000dB/ Ref 0.000dB [F2]

Tr2 S21 Log Mag 10.00dB/ Ref 0.000dB [F2]



1 Center 625 MHz

IFBW 70 kHz

Span 200 MHz Cor !