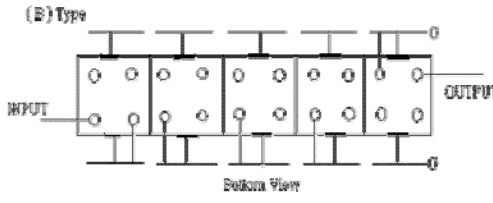
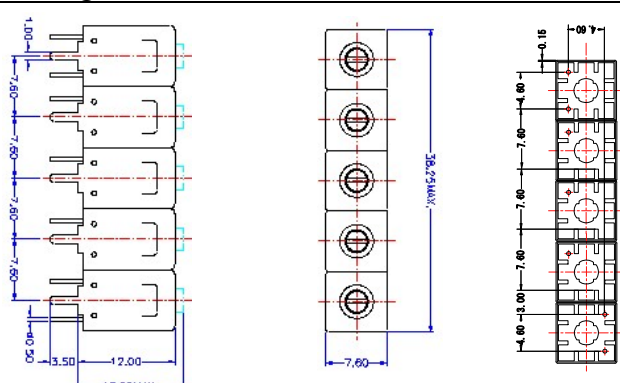


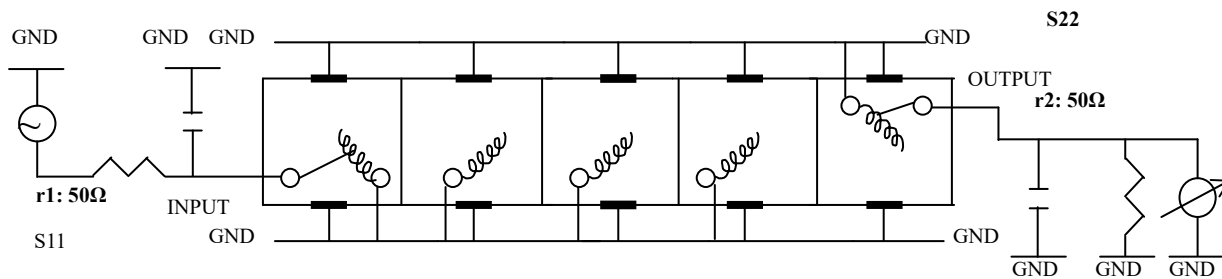
VHF UHF Helical Filter Specification Sheet

Customer Name		Temwell's Part No.	TV65214B-450M
Approval No. /dated		Temwell's Print name.	65214B 450M
Work Instruction No.	202008047CD	Date	Nov.20.2020

(1) Pin Position	(2) Size Diagram
	

(3) Electric Characteristic			
Item		Specify	Performance
Center Freq.(Fo) +/- 0.5 %		450 MHz	450 MHz
Insertion Loss		Typ. 2.0 dB	0.92 dB
-3 dB Bandwidth		Typ. 110 MHz	112.9 MHz
Sensitivity (Attenuation)	Fo - 200 MHz	Typ. 69 dBc	79 dBc
	Fo + 200 MHz	Typ. 43 dBc	48 dBc
	Fo - ()MHz	Typ. dBc	dBc
	Fo + ()MHz	Typ. dBc	dBc
Return Loss		Min. 12 dB	20.8 dB
Ripple		< 1 dB	dB
Impedance		In / Out : 50 Ω	In / Out : 50 Ω
(4) Torque for Tuning Screw		> 60gf • cm	
(5) Temperature Condition:			
Operating Temperature		0°C ~ +60°C	
Storage Temperature		-20°C ~ +70°C	
(6) Input Power		> 1Watt	

(7) Measuring Circuit: ※Easy to match Impedance S11/S22 50Ω by parallel with about(- -).



(Bottom View)

Approval	Supervisor	Designer	Aperture size
C.C.Chang	C.K.Chang	C.H.Yeh	7H5S(4*8.0)(8.04) 7H046RB6.5(J2)

TEMWELL CORPORATION

TEMWELL

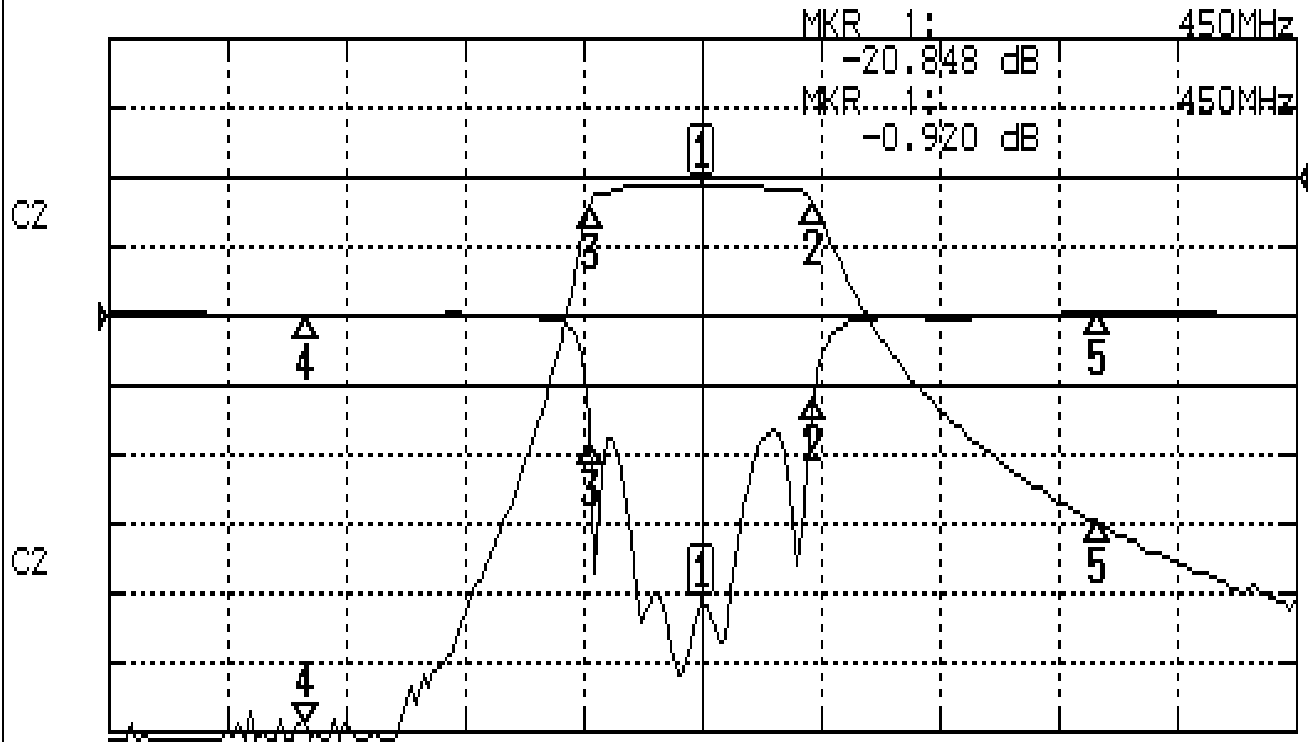
Form10-7H5B Vision D

RP(C.H.Y)

Performance-TV65214B-450M

202008047CD

CH1 S11 LOG MAG REF 0.000 dB 5.000 dB/
CH2 S21 LOG MAG REF 0.000 dB 10.000 dB/



CENTER 450MHz

[10.00 dBm]

SPAN 600MHz

CH1 MARKER LIST

1:	450.0000MHz	-20.842	dB
2:	506.5000MHz	-1.100	dB
3:	393.5000MHz	-1.900	dB
4:	250.0000MHz	-0.102	dB
5:	650.0000MHz	0.276	dB

CH2 MARKER LIST

1:	450.0000MHz	-0.920	dB
2:	506.5000MHz	-1.100	dB
3:	393.5000MHz	-1.900	dB
4:	250.0000MHz	-0.754	dB
5:	650.0000MHz	-9.828	dB